

The image shows a modern apartment building facade with a mix of materials and colors. On the left, there's a dark grey section with a grid of windows. To the right, there's a light grey section with a grid of windows and a balcony with a red railing. Below that, there's a section with a dark grey perforated facade and a balcony with a red railing. At the bottom right, there's a section with a dark grey perforated facade and a balcony with a red railing. The text "INNOVATIVE APARTMENT BUILDINGS" is overlaid in large white letters with black outlines. The word "LINKS" is at the bottom center in white letters with a black outline.

INNOVATIVE

**APARTMENT
BUILDINGS**

LINKS

- | | | | |
|-----|--|-----|--|
| 8 | MVRDV / Blanca Lleó
Mirador Building (Sanchinarro VII) | 124 | Lluís Clotet Ballús / Ignacio Paricio Ansuátegu
Housing at Diagonal Mar |
| 22 | Hertl Architekten
Housing St. Magdalen | 136 | MVRDV
Gemini Residence |
| 34 | Archi-tectonics
Greenwich Street Project | 148 | Glas Architects
Peter House |
| 44 | Dekleva Gregoric Arhitekti
Housing L | 160 | Sergio Pascolo
Housing "Alfred-Delp-Weg" |
| 52 | GCA Arquitectes Associats
Apartment Building in Sabadell | 172 | Kosmos
The Veskitammi Apartment Buildings |
| 62 | Ian Moore Architects
138 Barcom Avenue | 178 | VMX Architects
Apartment Block at Sarphatistraat |
| 74 | Geninasca Delefortrie
Apartment Building in Neuchâtel | 188 | OFIS arhitekti
2 Social Housing Blocks on the Coast |
| 82 | TEN Arquitectos
Parque España Residential Building | 200 | Peter Lorenz
Living at the Sun |
| 90 | Emmanuel Combarel Dominique Marrec
Architectes
Social Housing for Students in Argenteuil | 210 | Vincen Cornu Architecture
Apartment Building in Montreuil |
| 100 | INNOCAD
Golden Nugget | 220 | Rafael Moneo - José Antonio Martínez Lapeña
Elías Torres
Dwellings and offices in Sabadell |
| 112 | Satoshi Okada Architects
Tomigaya Apartment Building | 230 | Delugan Meissl Associated Architects
Apartment High-Rise Wienerberg |

Housing "Alfred-Delp-Weg"

The project is articulated in 105 social housing units in the University Campus of Göttingen. The building lot is located on the edge of the city within an area of re-conversion of former army barracks, known as Zietenterasse, now subject to new residential development. The layout and volumes of the project are strictly correlated to the architectural and typological solutions adopted, an approach which allowed an appropriate definition of the character and scale of the large settlement, conferring an urban feel to the sparsely inhabited area. The three buildings are arranged in the long narrow lot along the existing road. Each block consists of an assembly of 17,4 m modules, in correspondence to the dimensions of the stairwells. Through the design of the roofs, the sequential arrangement of modules results in a compact and monolithic building capable of restoring the urban relationship

between street and building. At the same time, the rhythmic articulation of the modules generates an image which favours a sense of identification on the part of the inhabitants with their home. The structure of the modules was conceived to create housing units which are both flexible and modifiable, with each unit designed to offer spaces that are as neutral as possible. In this way, their use and furnishing can be easily varied in response to the requirements of changing lifestyles, life stages and family composition.

The exterior is characterised by the aluminium roofing of the volumes, red plastered facades along the street front, and verandas in exposed concrete looking onto the gardens.

Forty-two units have been built in 2003 and a second block will be added in 2005 to complete the building complex.

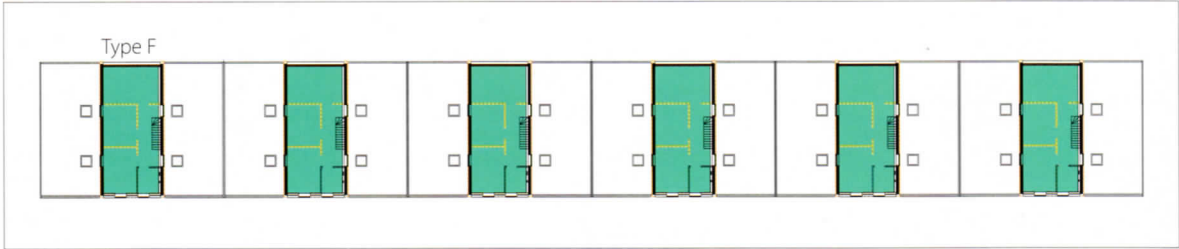
PROJECT: Housing "Alfred Delp-Weg"
LOCATION: Göttingen, Germany

ARCHITECTS: Sergio Pascolo
PROJECT MANAGEMENT: Nileg mbH,
Hannover
MECHANICAL ENGINEER:
Peter Schleevoigt, Göttingen
LANDSCAPE DESIGN:
Johanna Spalink-Sievers, Hannover

PHOTOGRAPHS: Roland Halbe / Artur



FOURTH FLOOR



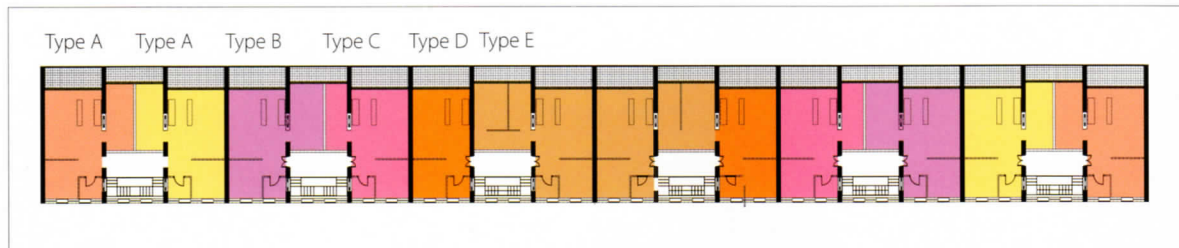
THIRD FLOOR



SECOND FLOOR



FIRST FLOOR



GROUND FLOOR





APARTMENT TYPES



Type A



Types B and C



Types D and E

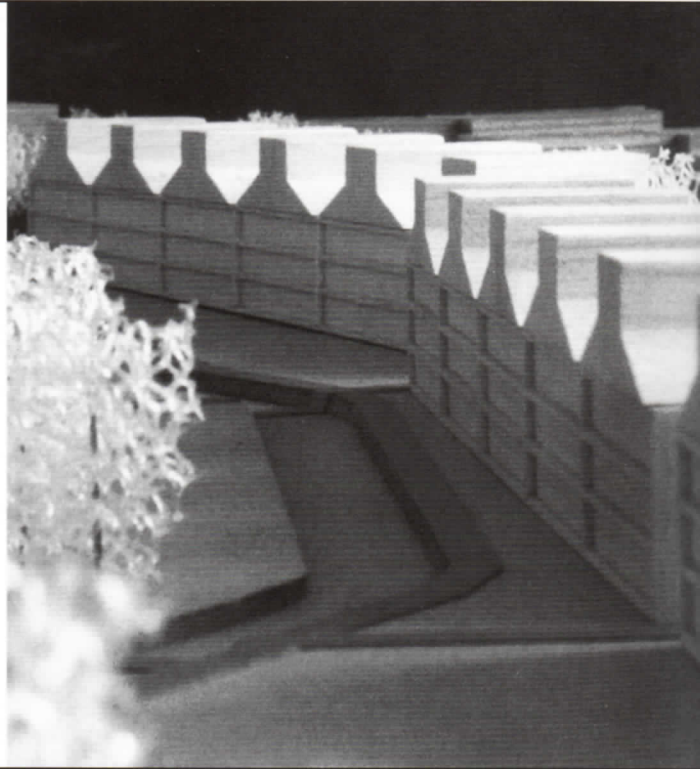
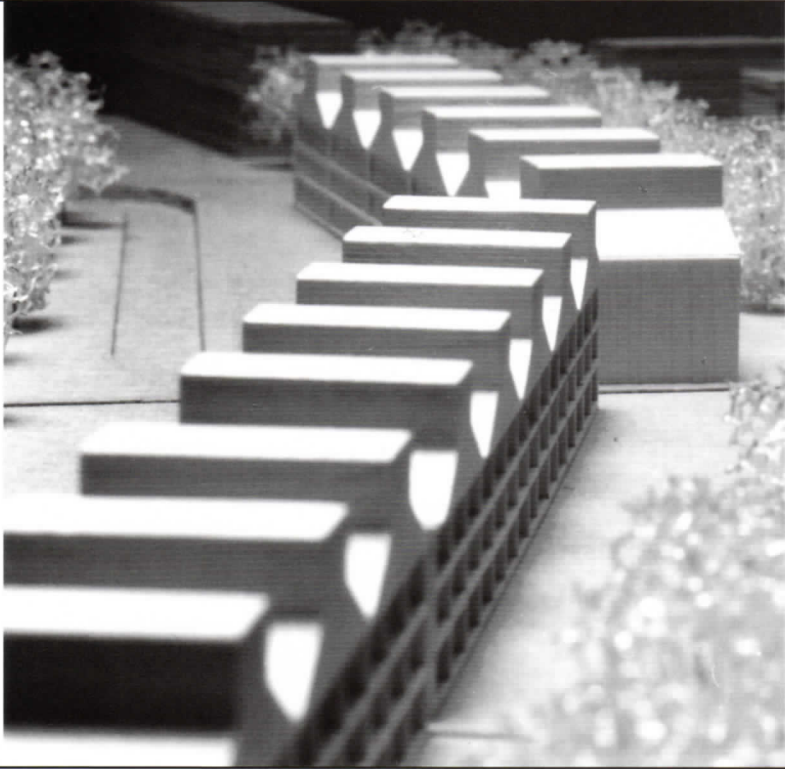


Type F - first floor



Type F - second floor





166





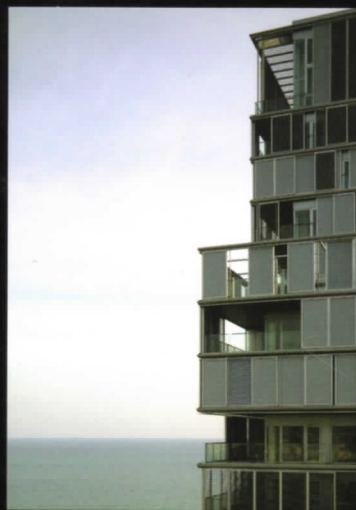








Various prestigious architects present their most recent creations for apartment buildings, from the most innovative and avant-garde proposals, to those that attempt to create spaces whose personalities adapt to their contents. Conventional vertical dwellings, buildings for specific groups and residential complexes share a common spirit: rigour, imagination and respect for both the persons who will occupy them and the environment in which they are located. The works of MVRDV, Satoshi Okada, Peter Lorenz and Archi-tectonics, to name just a few of the architects included in this book, provide stimulating answers, ingenious solutions, unexpected points of view and proposals that will without doubt influence the conception of residential architecture.



ISBN 84-96263-85-1



9 788496 263857