

LIVING THE TRASPARENCY



SERGIO PASCOLO ARCHITECTS

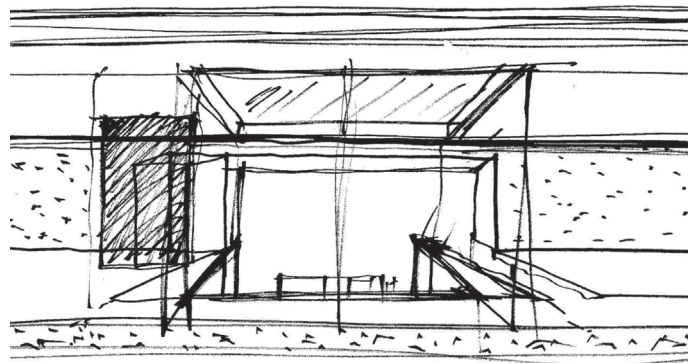
LIVING THE TRASPARENCY

This project concerns the construction of a penthouse at the rooftop garden level of an eight floors residential building in the city centre of Milan.

The penthouse structure consists of two building elements: a flat roof whose slender structure takes on the form of a horizontal white surface, and a completely transparent vertical perimeter, in glass from floor to ceiling. Punctuated only by slender supports in brushed steel, the glass walls extend the interior out to the rooftop garden terrace and beyond, across the cityscape of Milan.

The focal point of the project is the full glass central skylight covering the double-height space which connect the penthouse to the apartment below.

Both bearing walls and roof were built using prefabricated wood panels, while the 6×6 cm columns are in brushed steel. 6×4 cm brushed steel sections were used to construct the framework of the glass facade. They support 190×235cm glass panels in both fixed and operable frames. The operable windows are motorized and controlled electronically. Throughout the home we applied a seamless fluid-applied resinous „terrazzo“ flooring with pitch black Belgian marble dust.



Client: Private
Project: 1999
Inauguration: 2000
Roof area: 700 sqm
Floor area: 170 sqm

LIVING THE TRASPARENCY



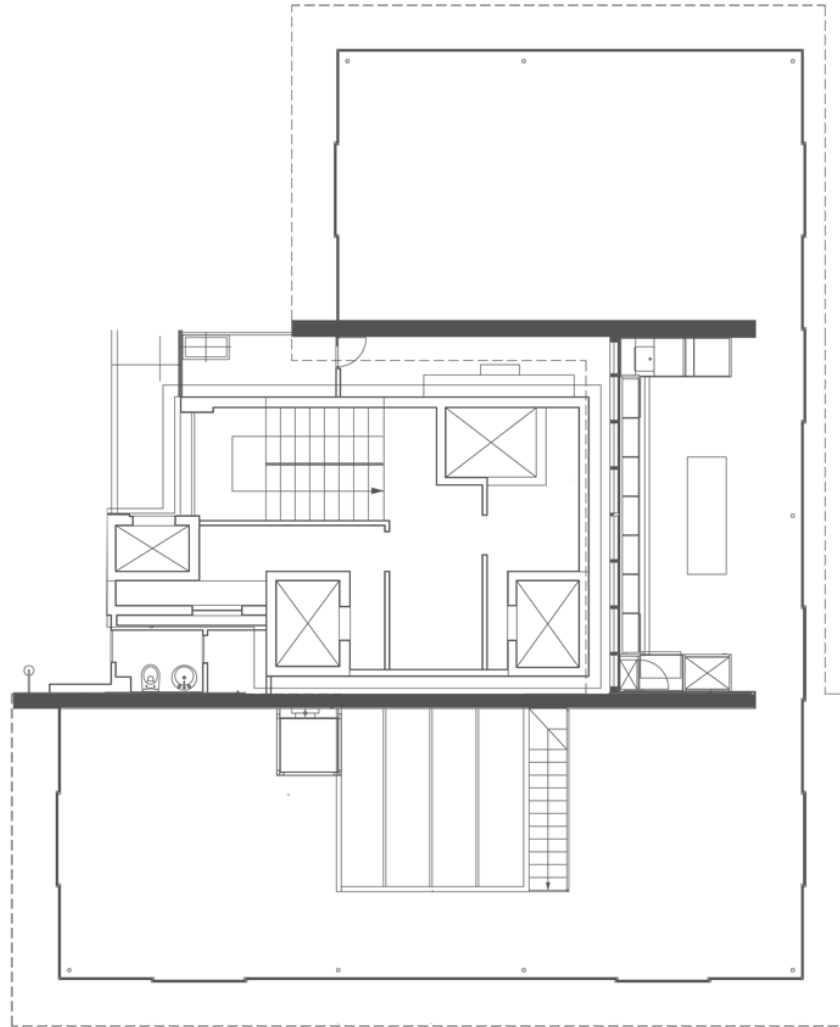
SERGIO PASCOLO ARCHITECTS

LIVING THE TRASPARENCY



SERGIO PASCOLO ARCHITECTS

LIVING THE TRASPARENCY



www.sergiopascoloarchitects.com

