

MUNICIPAL STADIUM IN BOTTICINO

The municipal stadium is part of the Botticino social, sports and cultural centre. Like the other structures of the centre, it was sited along the edge of the new city park. Its integration with the surrounding context was achieved through the use of materials, the same as those of the theatre (stone, plaster and wood), and through landscaping elements which reduce the impact of the fence around the playing field and create visual continuity between the enclosed playing field and the green areas open to the public. The stadium structures consist of three blocks arranged linearly along the west side of the playing field, with interior courtyards between them. The athlete's quarters are located on the south end, the 70 m long stands are at the centre, and the spectators' facilities are to the north. The stands are characterised by an arch at the rear wall which gives form to the spectator entry ramps and defines the entrance area for spectators and athletes as an architectural space. A wood roof covers a 20 m long section at the centre of the stands. The position and form of the roof were designed to permit maximum visibility of the playing field while providing protection from the elements. A 2.5 m high moat creates a barrier between the seating area and the playing field without interfering with the full visibility of the playing field. The stands have a 500-seat capacity, 200 of which are covered.

Client: Comune di Botticino

Project: 2000

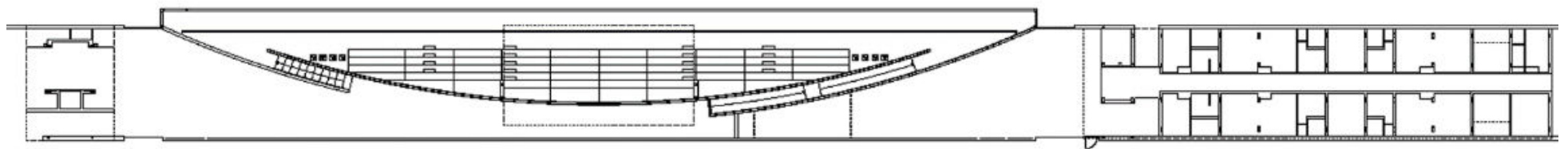
Completion date: 2006

Site area: 88.000 sqm

Total floor area: 2.000 sqm



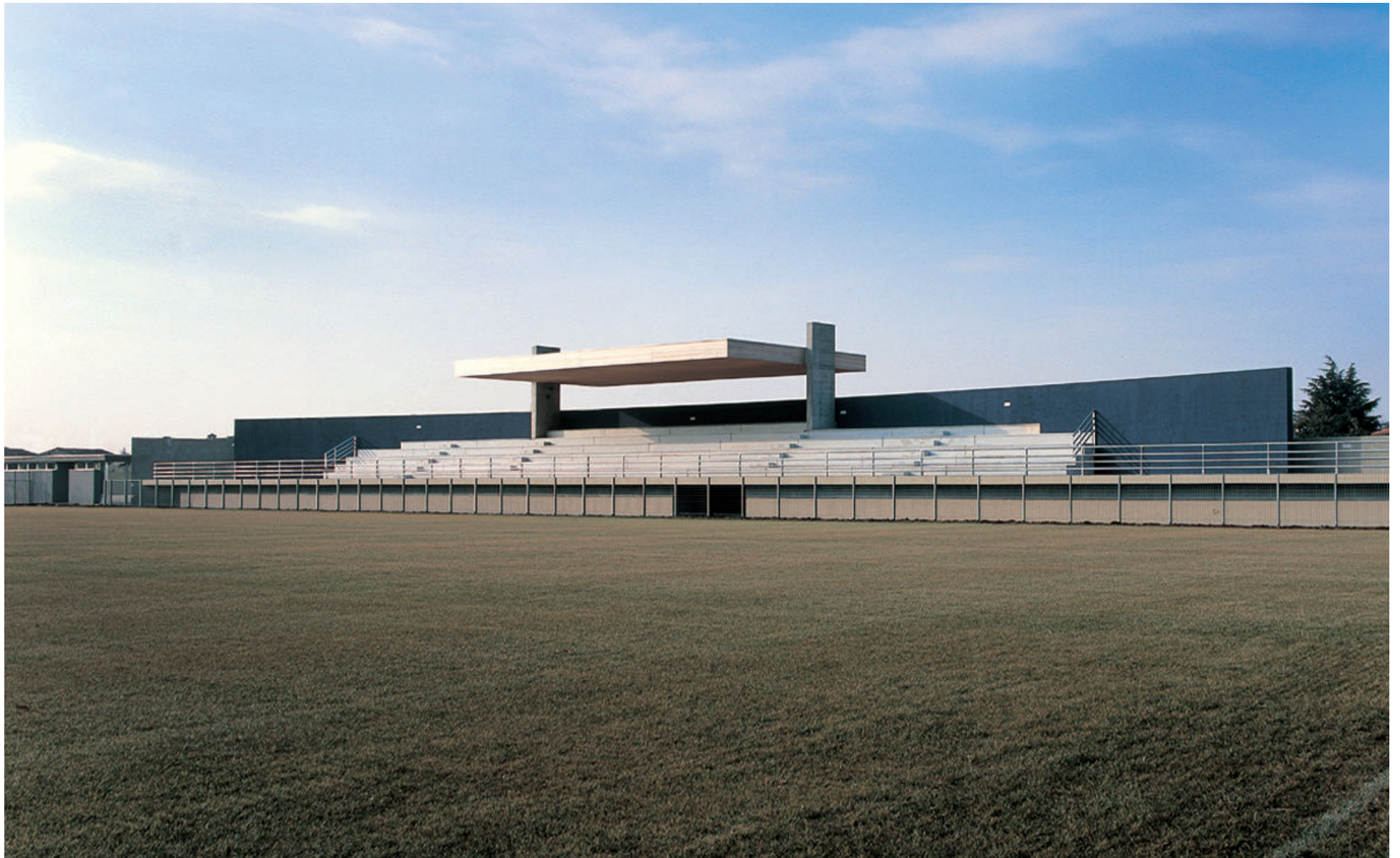
Municipal stadium - Botticino



Municipal stadium - Botticino



Municipal stadium - Botticino



Municipal stadium - Botticino



Municipal stadium - Botticino



Municipal stadium - Botticino

