

# GUGGENHEIM HELSINKI

The new Guggenheim Helsinki will restore nature in the Helsinki bay: it will teach the world about a new approach to human habitat and urbanity, stimulating citizens and visitors alike to a continuous dialogue about the soul and essence of humanity in relation to its physical habitat.

The building is metaphorically resting on rocks that border the harbour piers – from grey to green!

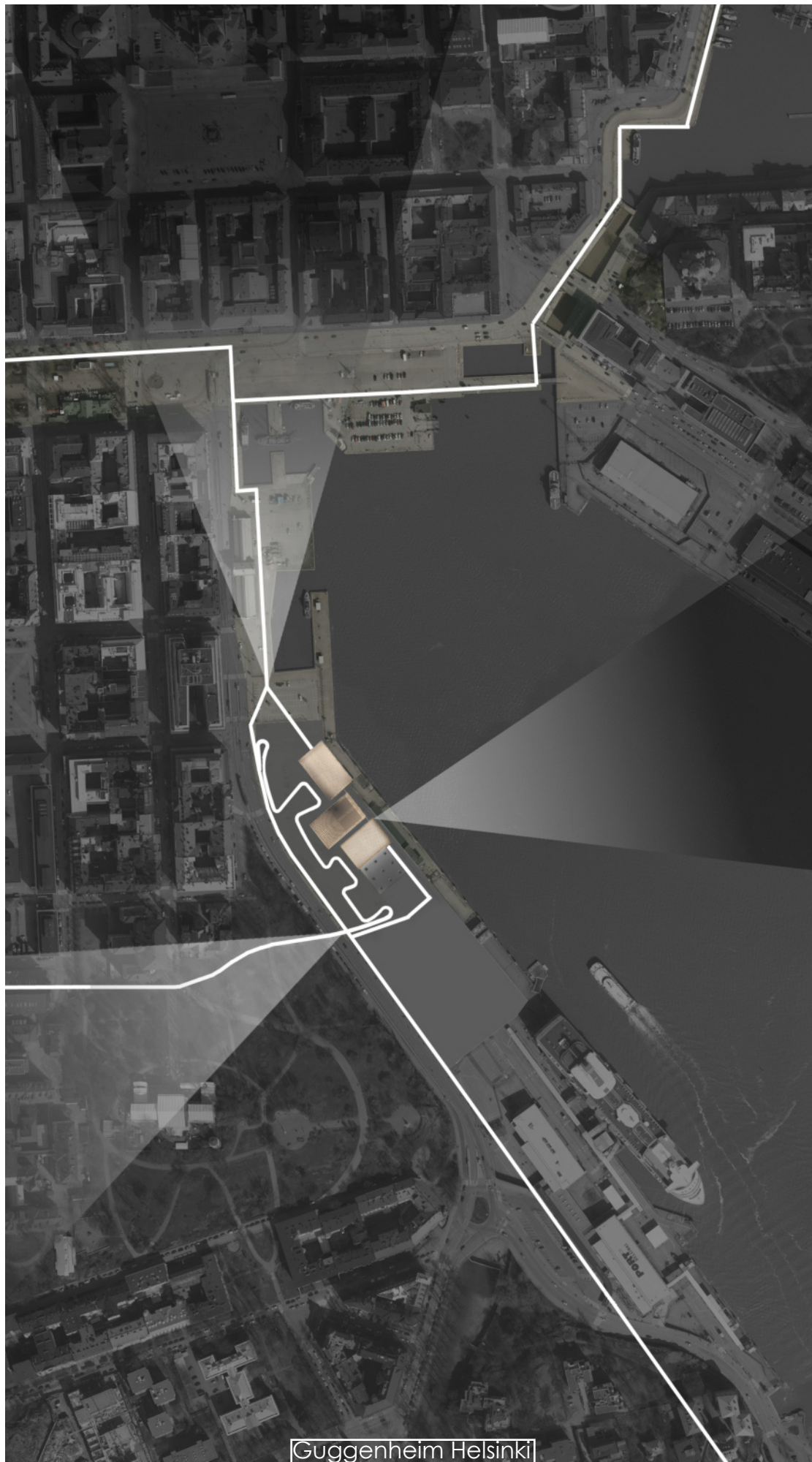
The solid and discontinuous elements (rocks, stones, curved walls) create a flowing space composed of open and closed areas, different platforms and water tables. Above it, rise three large wooden elements that represent the forest, symbol for the everlasting strength and intensity of nature. The reinstated natural environment creates a new space – adaptable, crossable, and movable – which represents the new state of connectivity that humanity seeks with its habitat: Living within nature through forms, elements and natural materials while perceiving and enjoying digital technologies and multimedia experiences.

Guggenheim Helsinki Design Competition - 2014

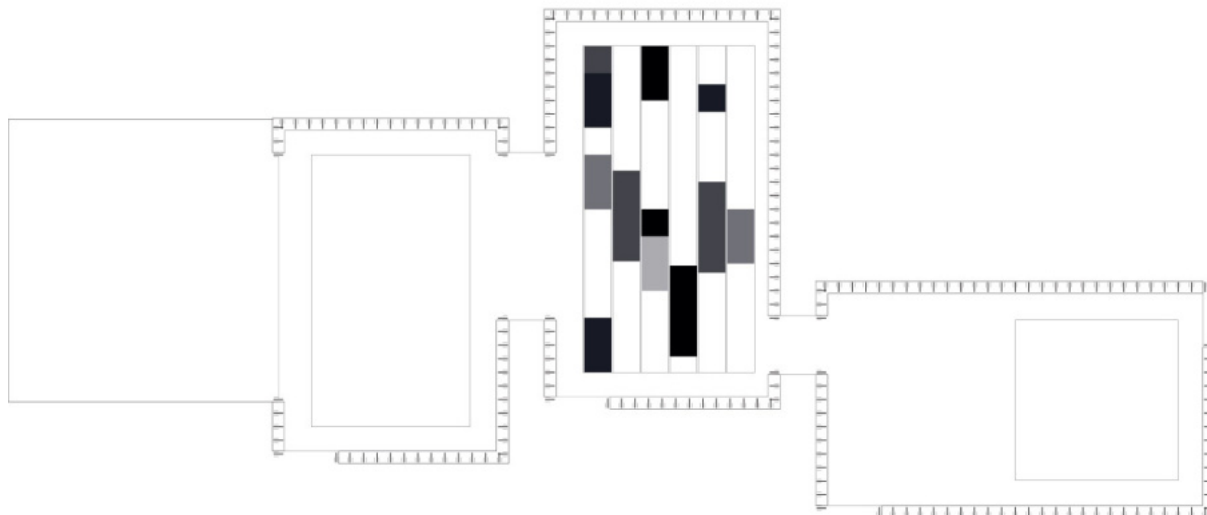
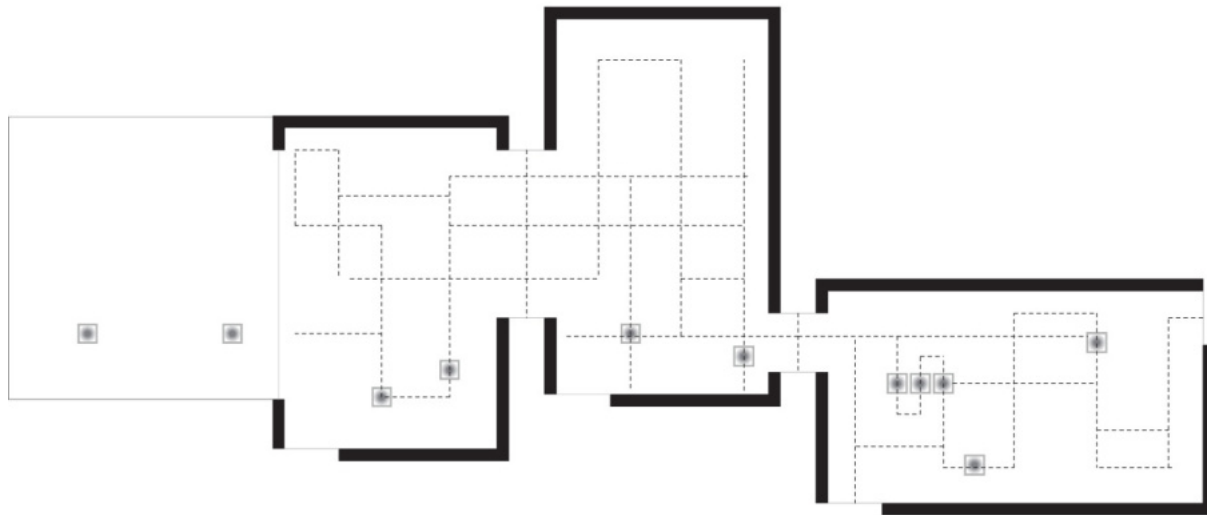
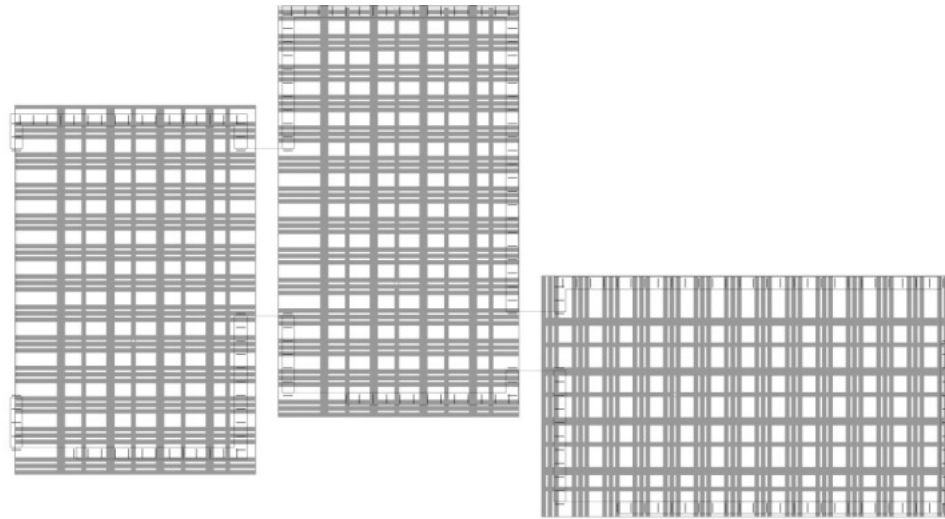
Client: Solomon R. Guggenheim Foundation, City of Helsinki

Site area: 18.520 sqm

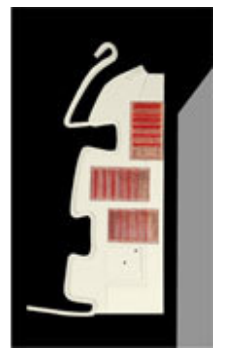
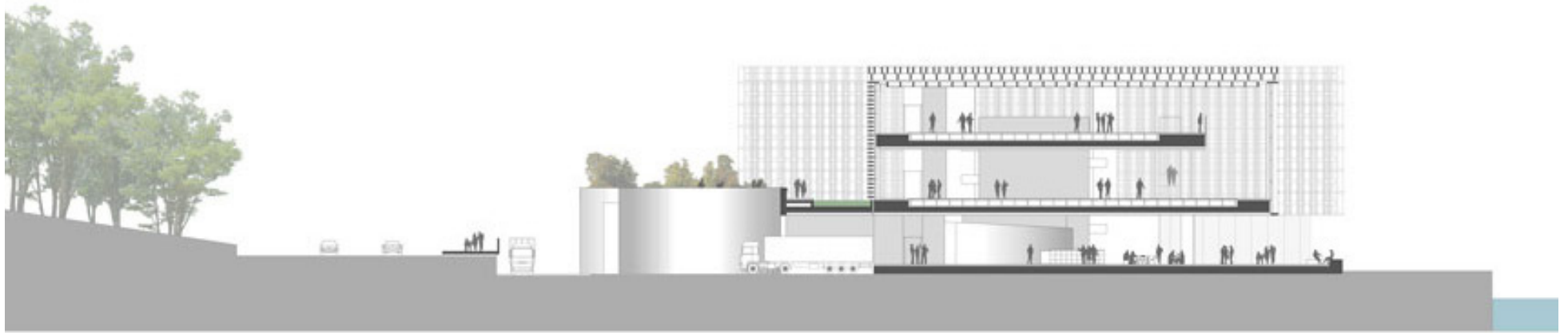
Total floor area: 12.100 sqm



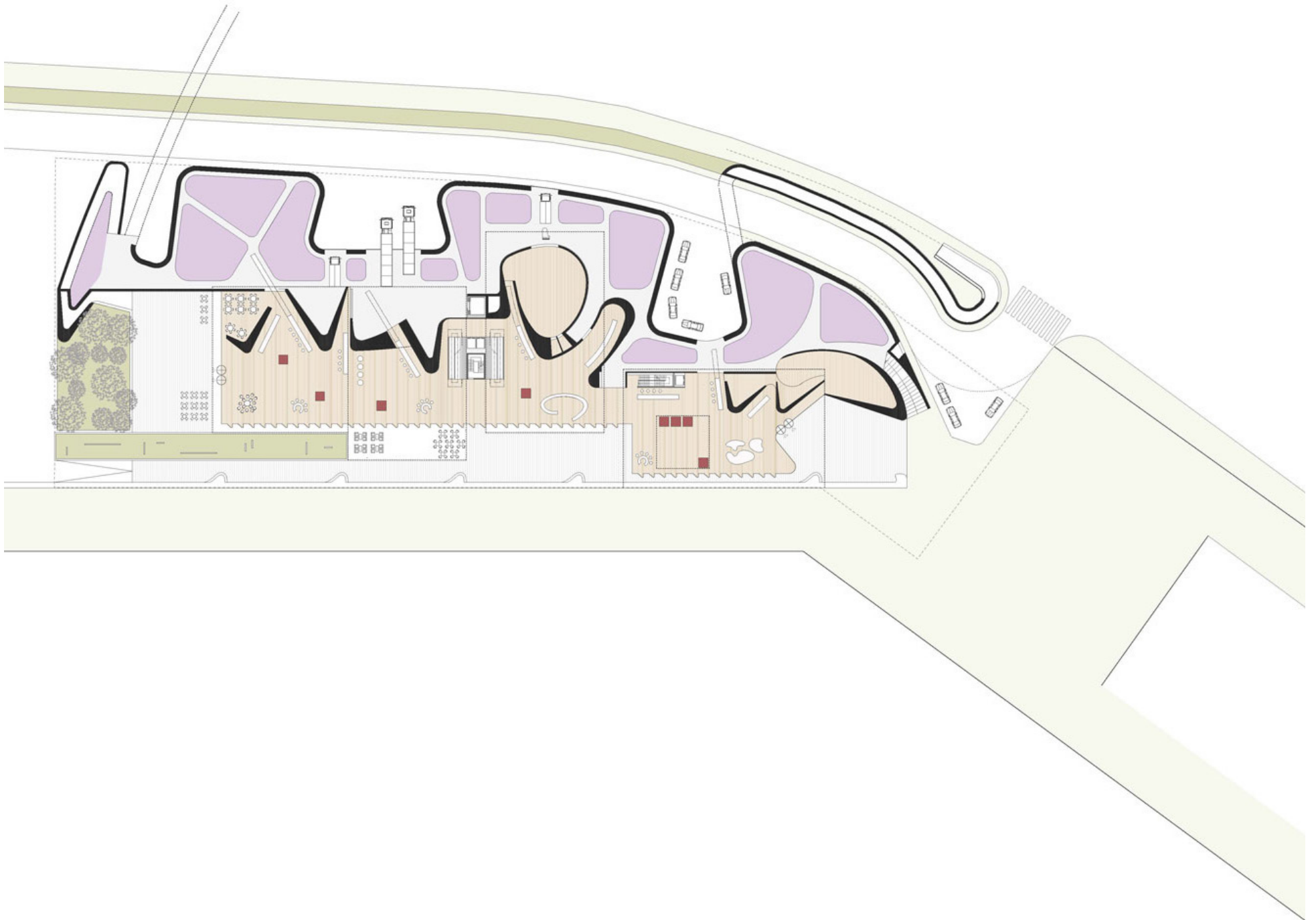
Guggenheim Helsinki



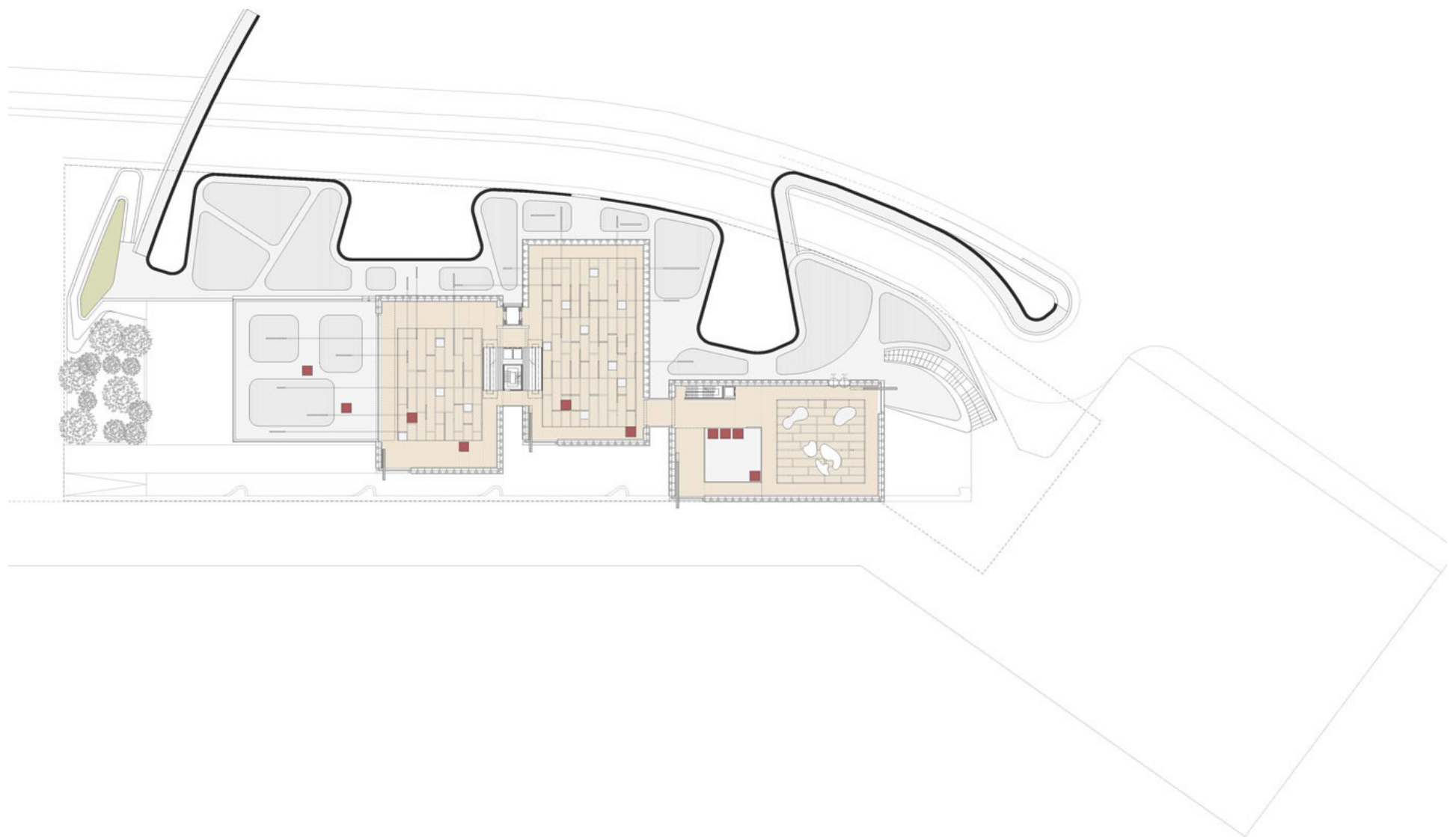
Guggenheim Helsinki



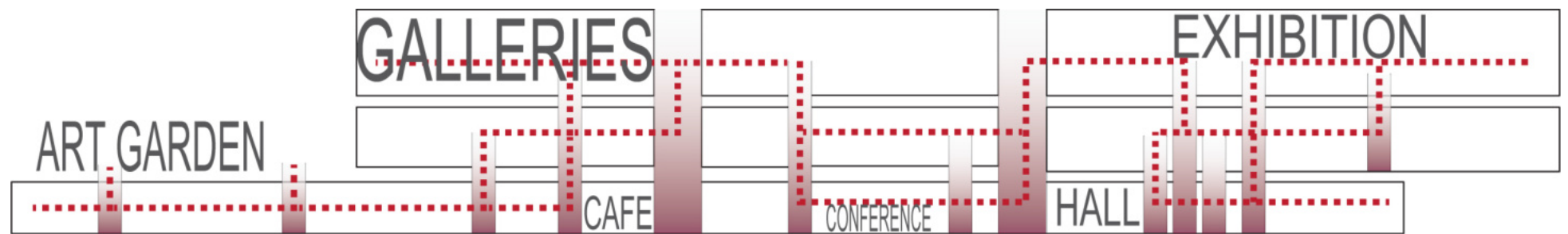
Guggenheim Helsinki



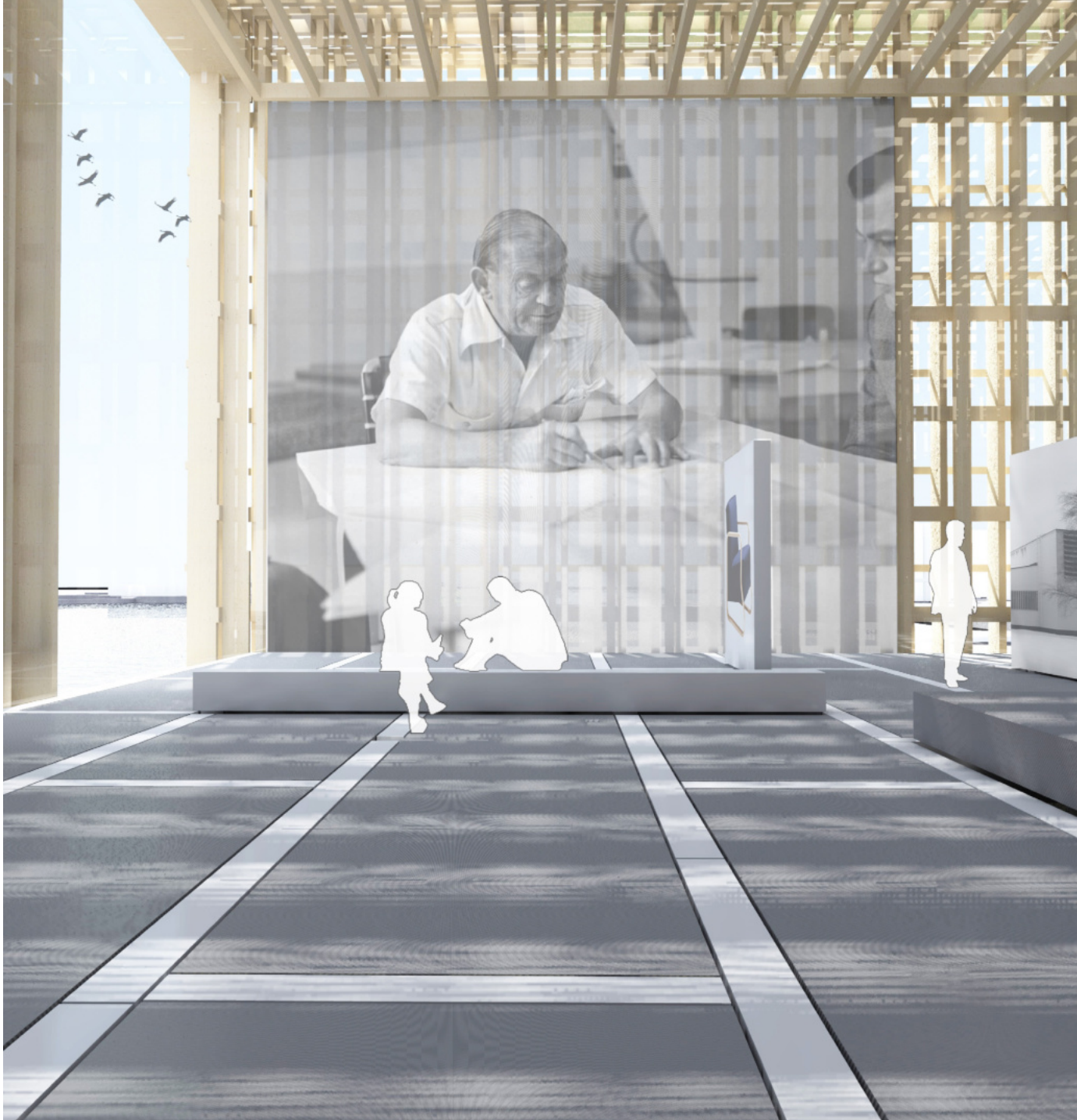
Guggenheim Helsinki



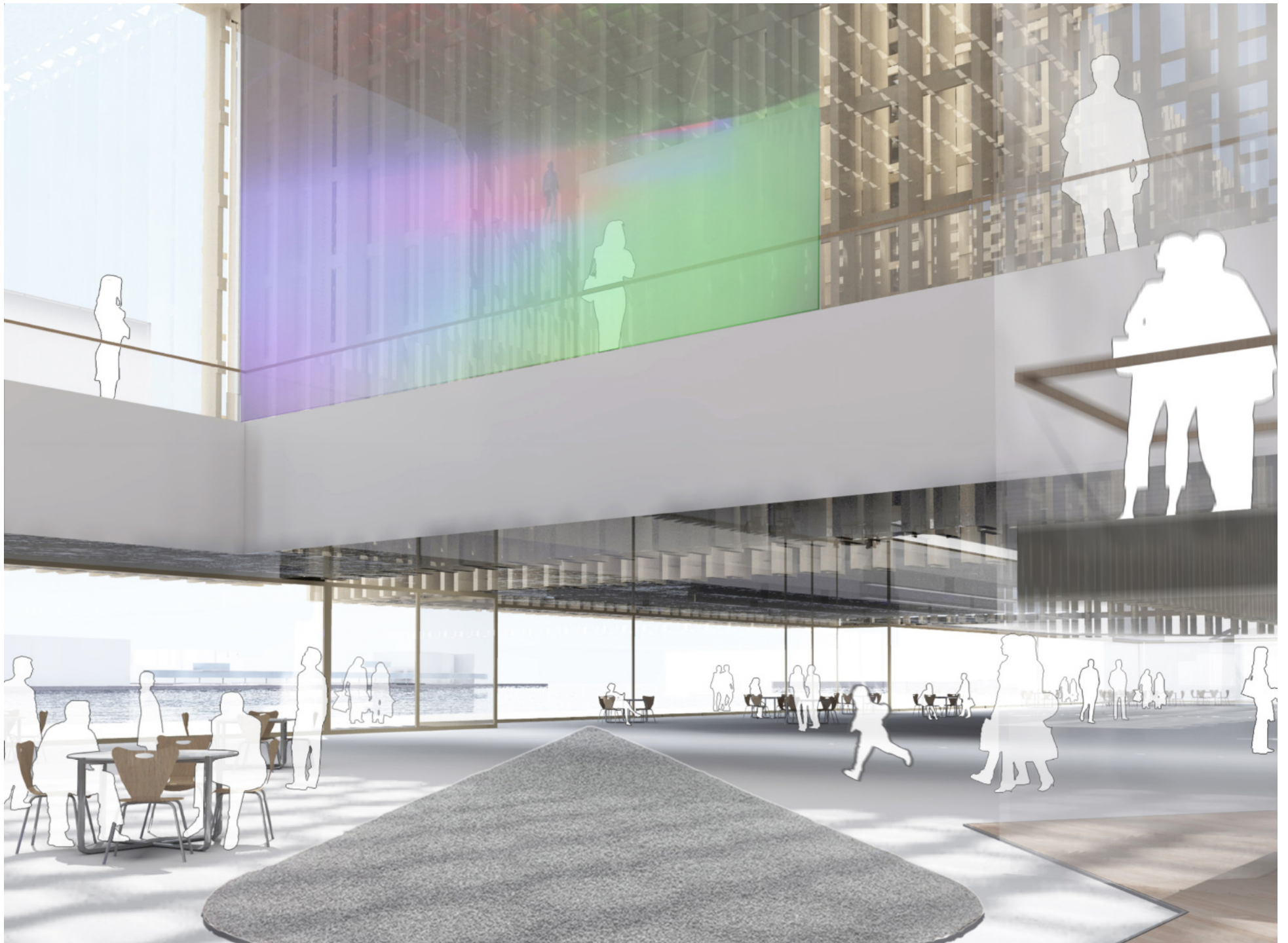
Guggenheim Helsinki

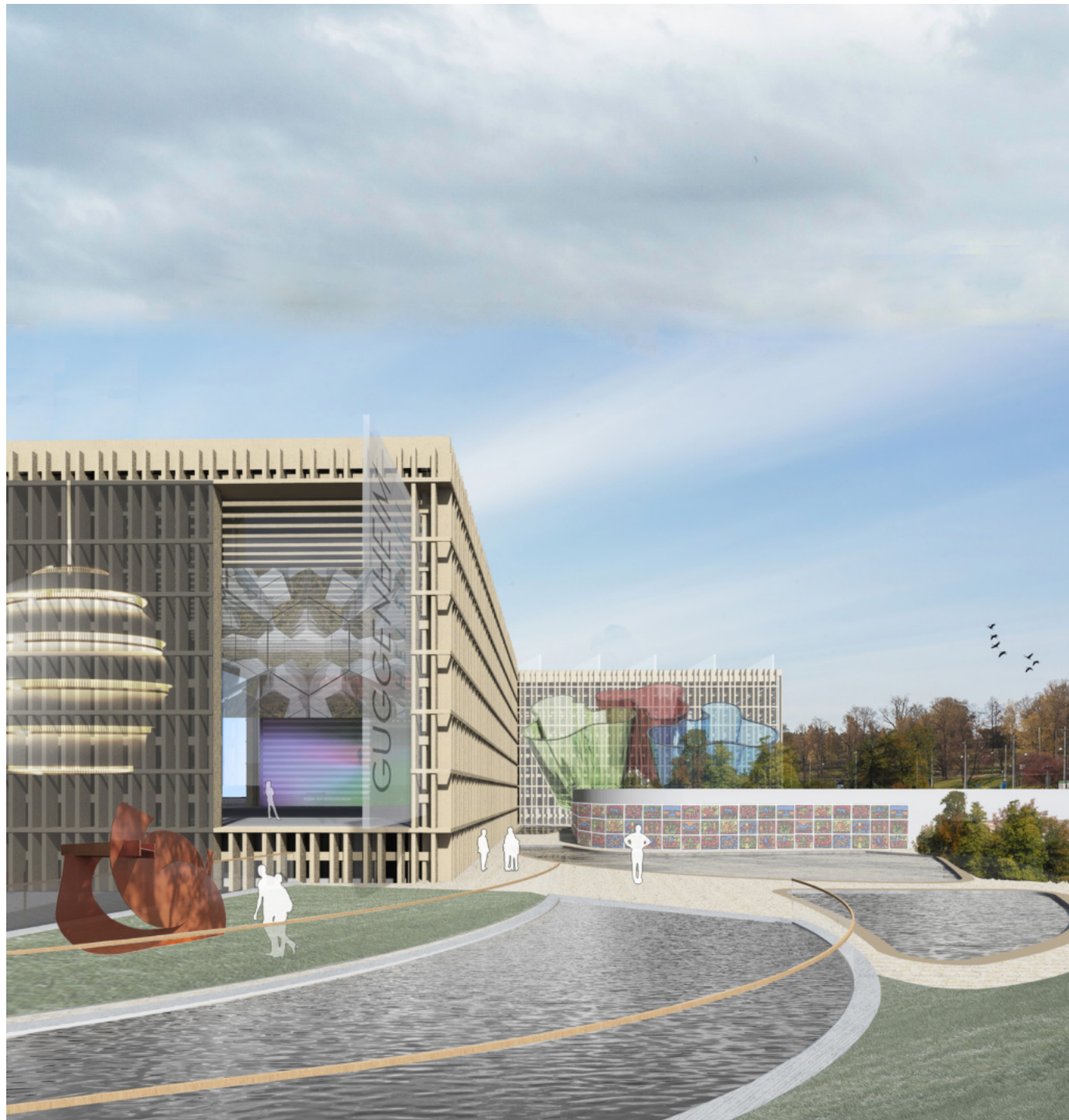


# GUGGENHEIM PROMENADE











Guggenheim Helsinki

