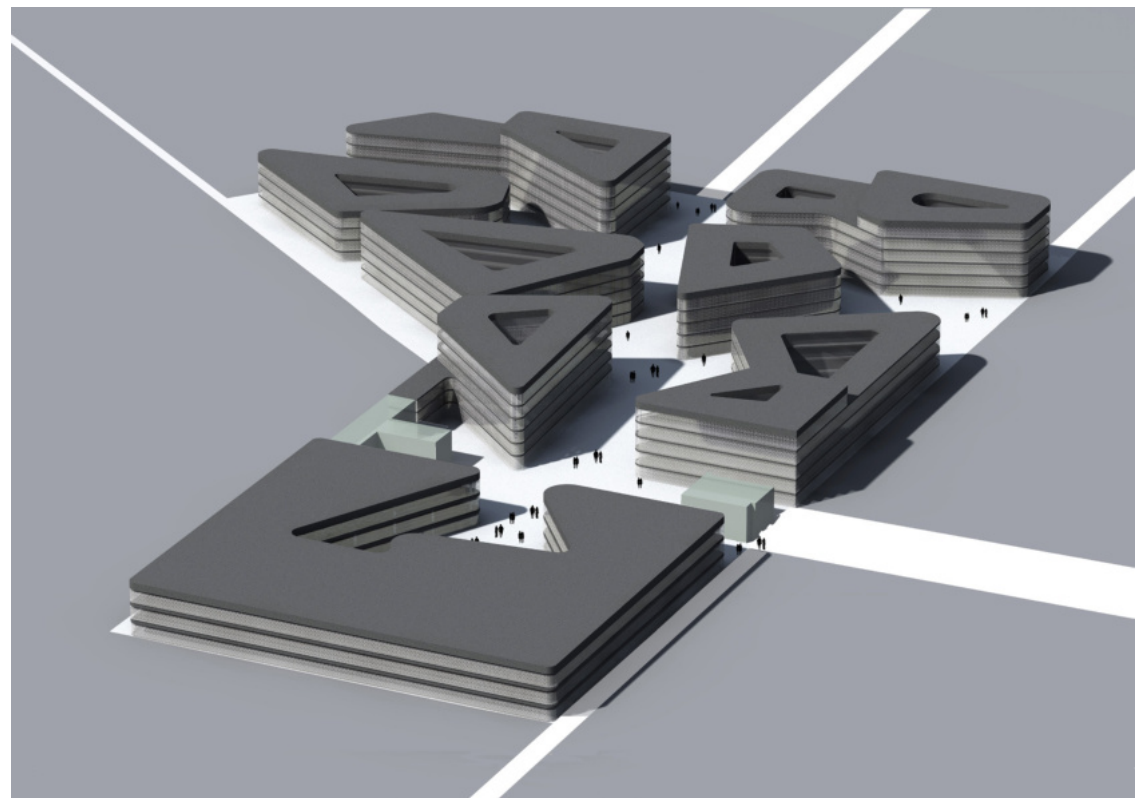
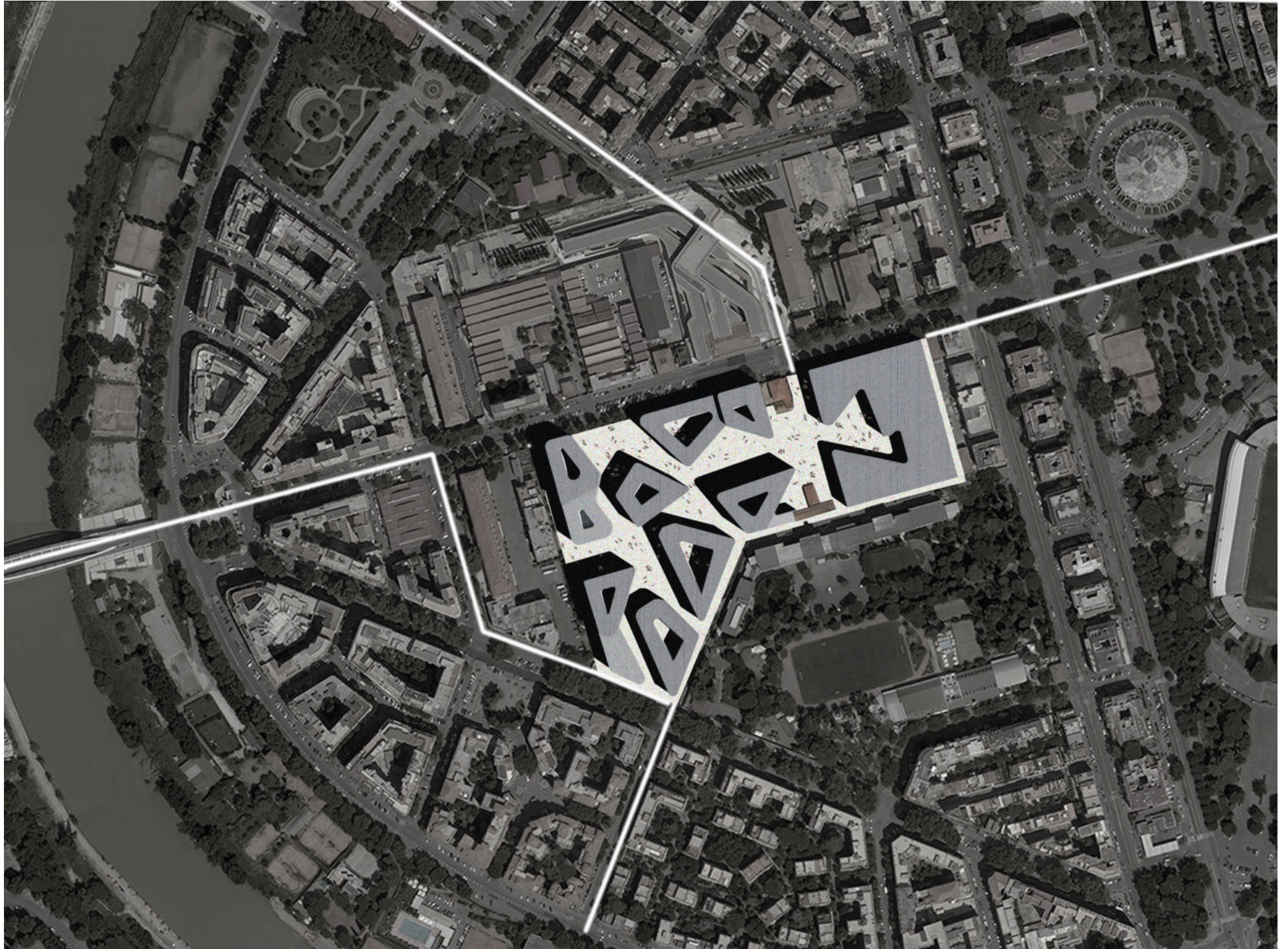


QUARTIERE FLAMINIO IN ROME

International competition on two stage "Progetto Flaminio" - 2015

Client: CDP Investimenti Sgr
Competition, Second stage
Site area: 5,1 ha
Residential: 29.000 m²
Social housing: 6.000 m²
Hotel: 5.000 m²
Cultural & Education: 27.000 m²





Quartiere Flaminio - Rome

