

# CAMPUS SUPSI LUGANO

The design transforms the area into a landmark for all the surrounding districts by providing an element of strong urban character that completes the central area of the city at the north. The new urban "place" will feature a green square bordered by the university buildings that frame the central landscaped and pedestrian space like a backstage. The building for common facilities developed along the river emerges like the tip of an iceberg from such setting as a new urban landmark as well as the recognizable symbol of the Campus itself. The central space is a meeting place. Its wide porches grant access to the university and the common facilities buildings. It is also conceived as a place for rest either in or sheltered from the sun, and as a recreational point with its cafeterias or as a place for rest and relax along the river. A large elevated podium allows for a better view of the river. Due to the slope of the central garden, it creates a green dune that borders the square to the south and protects it from view and from the noise of traffic along Via La Santa. The surfaces behind the buildings to the west towards the area's border are also treated as green embankments that complete the campus area. Four large roofs cover the buildings' main blocks and are connected into a continuous system of covered passages. Looking like huge "leaves", they also become urban landmarks that provide the campus with a strong and unifying feature. At the same time, they accommodate the expansive photovoltaic and thermal systems that provide renewable energy to a significant portion of the campus.

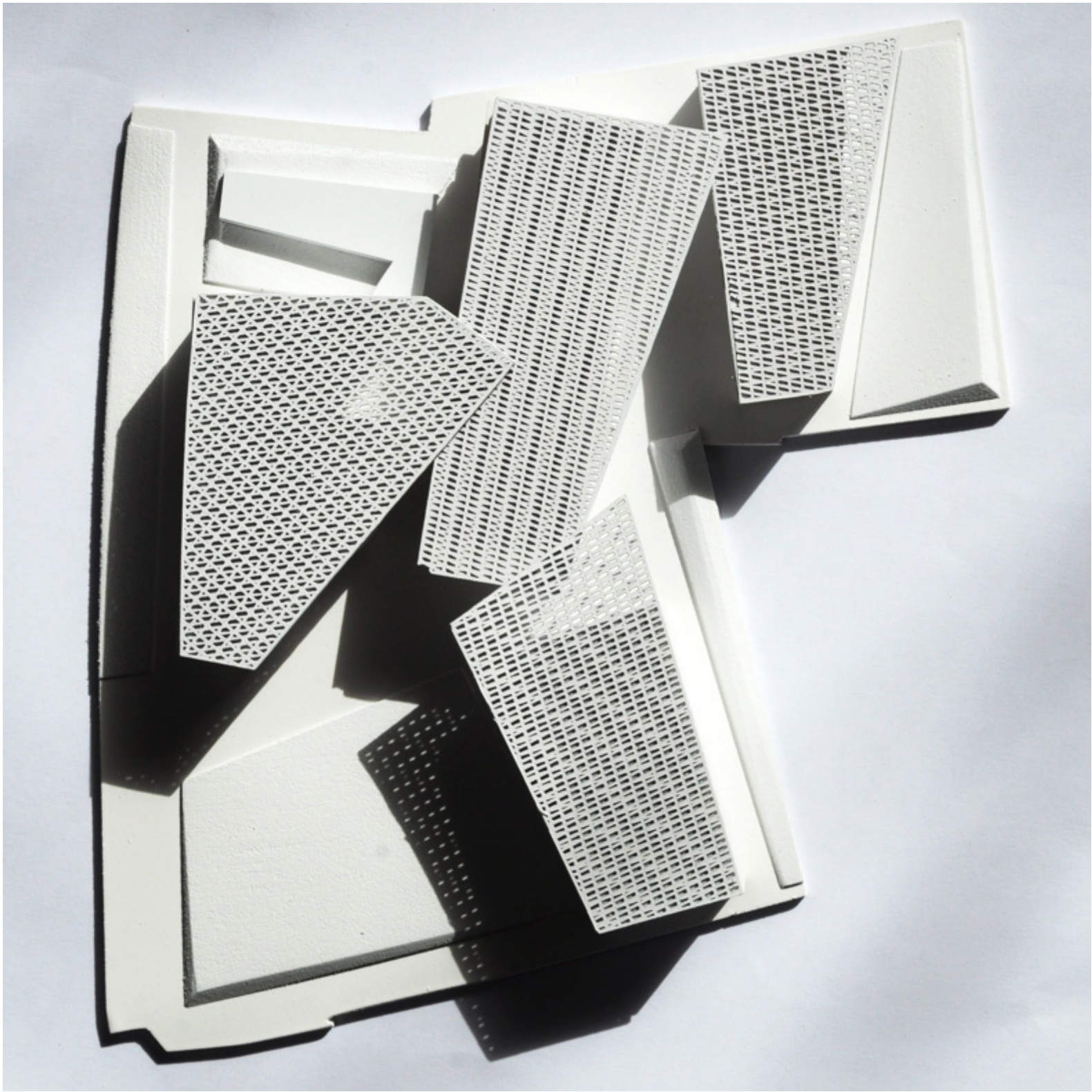
New University Campus in Lugano-Viganello, including buildings of the University of Italian Switzerland (USI) and the University of Applied Sciences of Italian Switzerland (SUPSI).

Organizer: University of Applied Sciences of Italian Switzerland and the Foundation for the Lugano faculties of USI for the University of Italian Switzerland

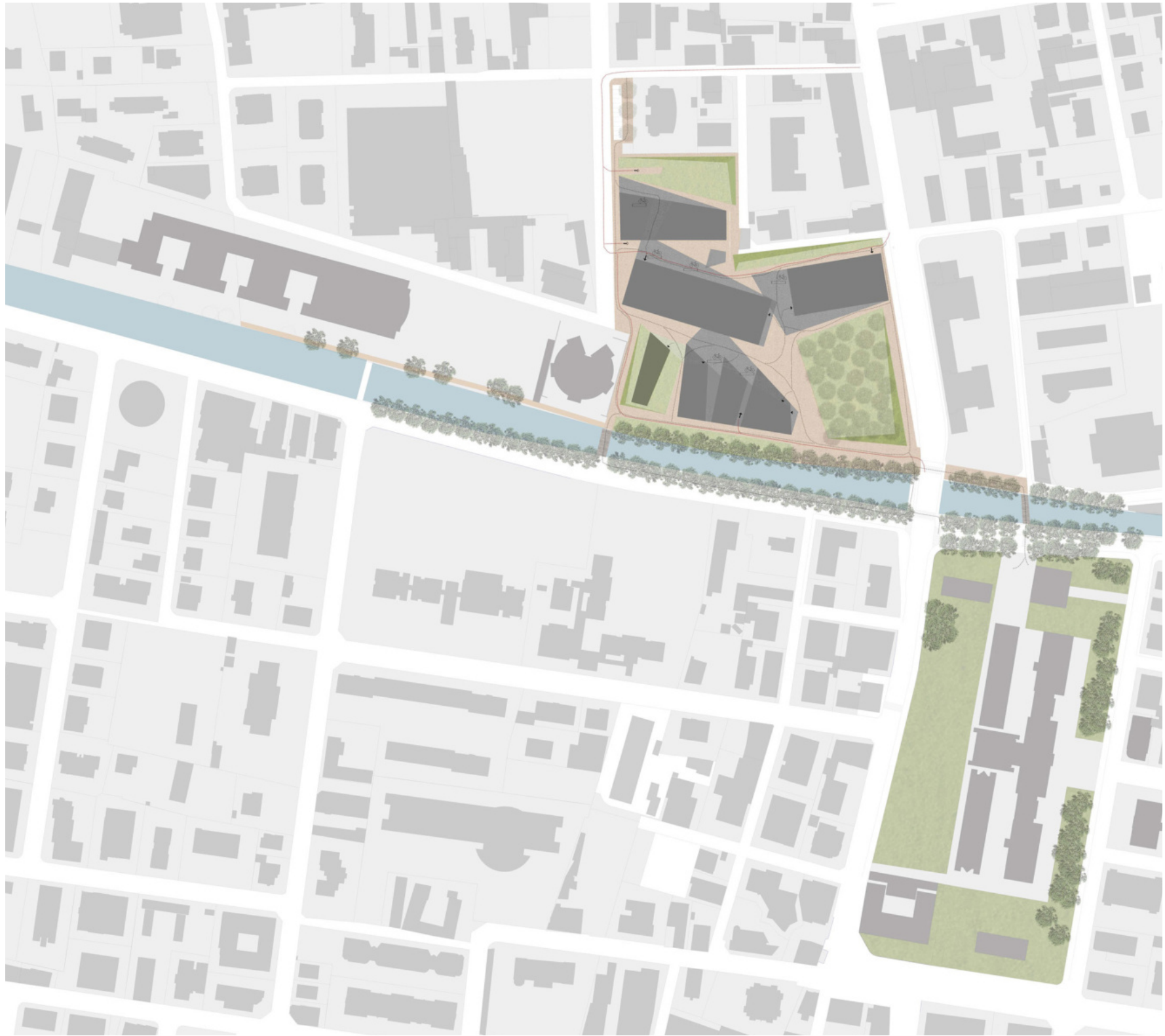
project competition in two phases - 2011 - First Phase

Intervention area: 22.200 sqm

Gross useable surface area: 37.000 sqm



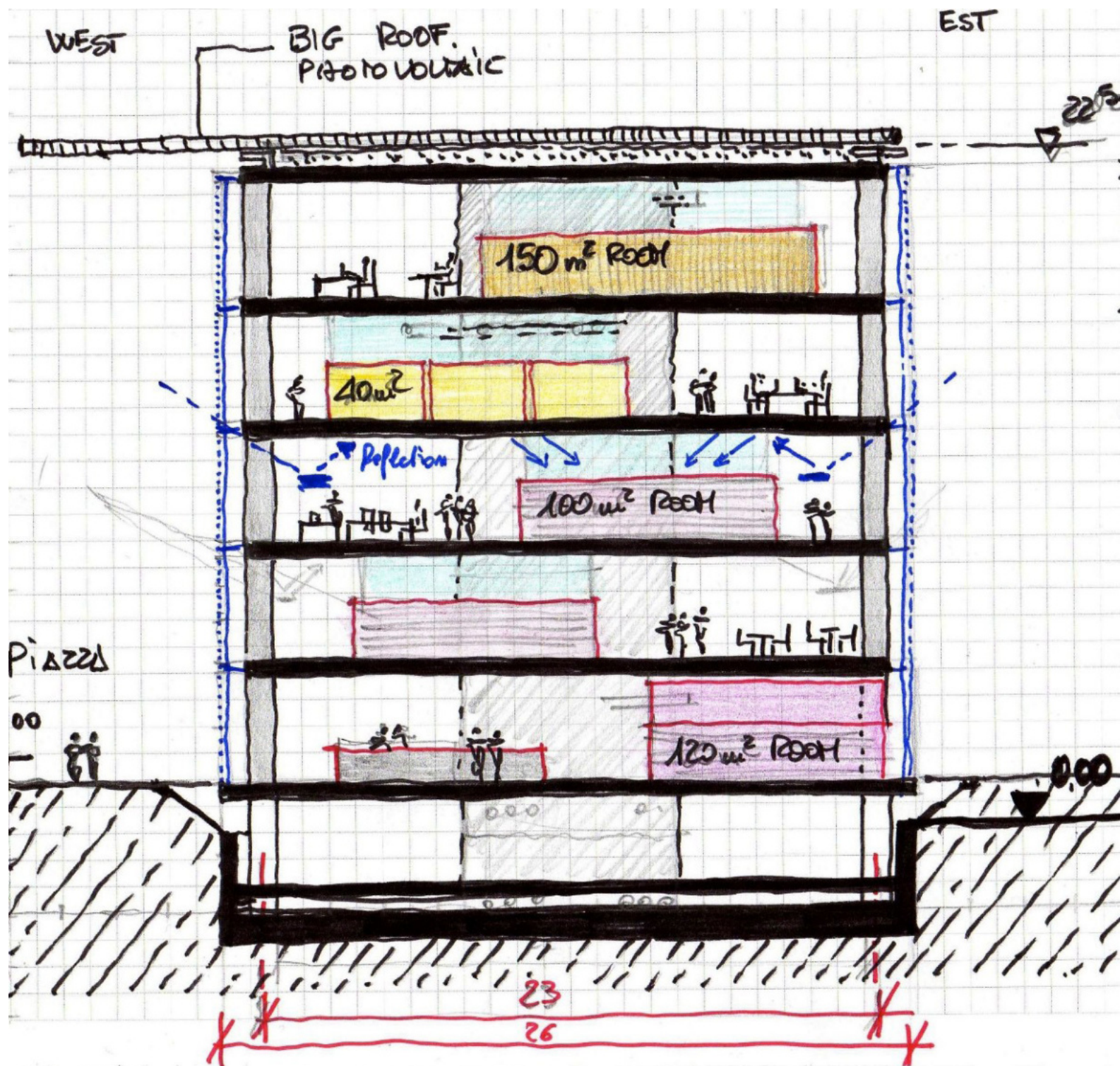
Supsi Campus Lugano

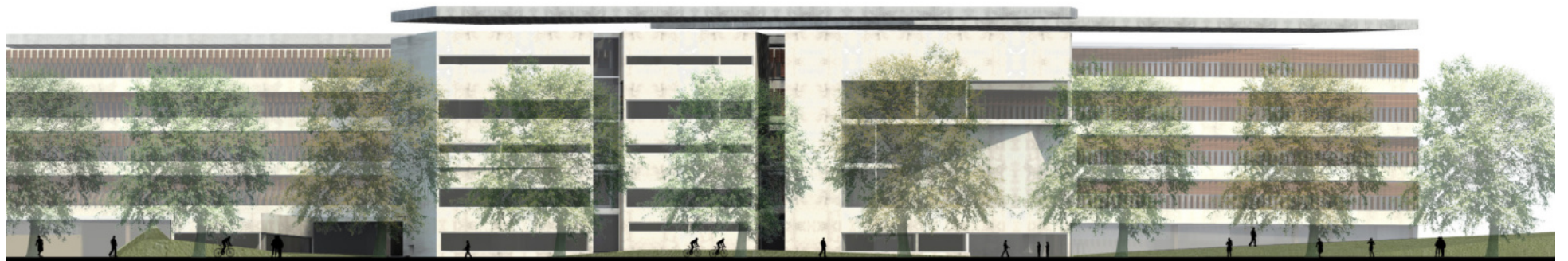
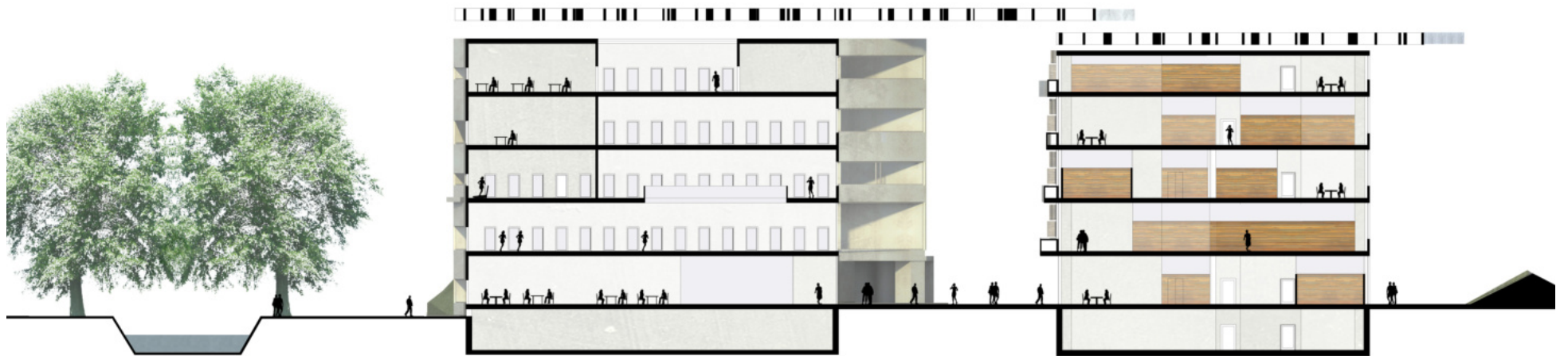


Supsi Campus Lugano



Supsi Campus Lugano

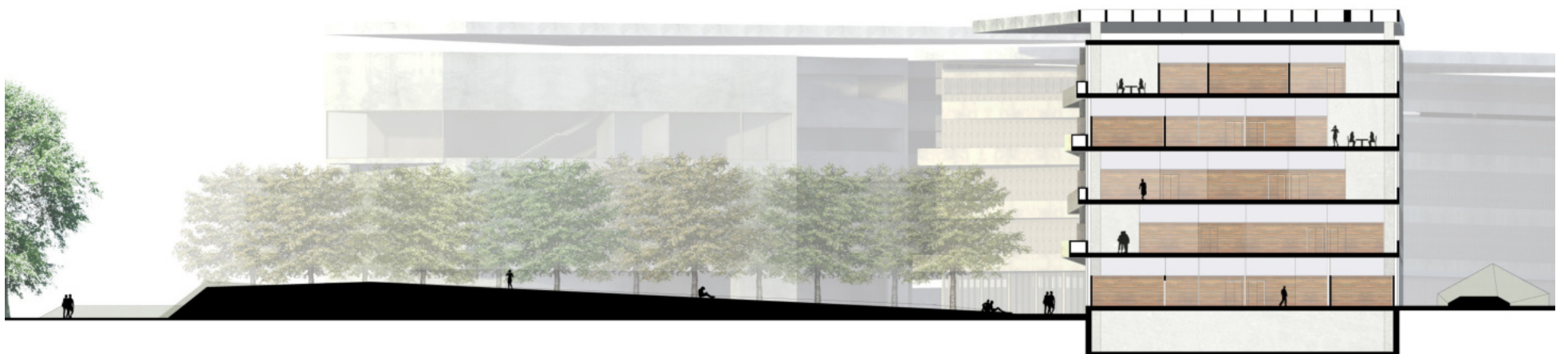
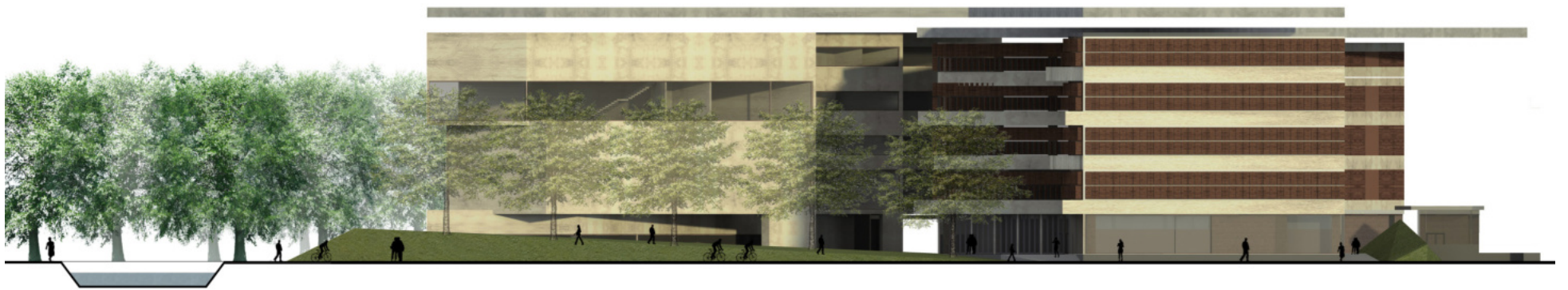




Supsi Campus Lugano



Supsi Campus Lugano



Supsi Campus Lugano





Supsi Campus Lugano

