



ECO WATER FACTORY
ADRANO - CATANIA

SERGIO PASCOLO ARCHITECTS

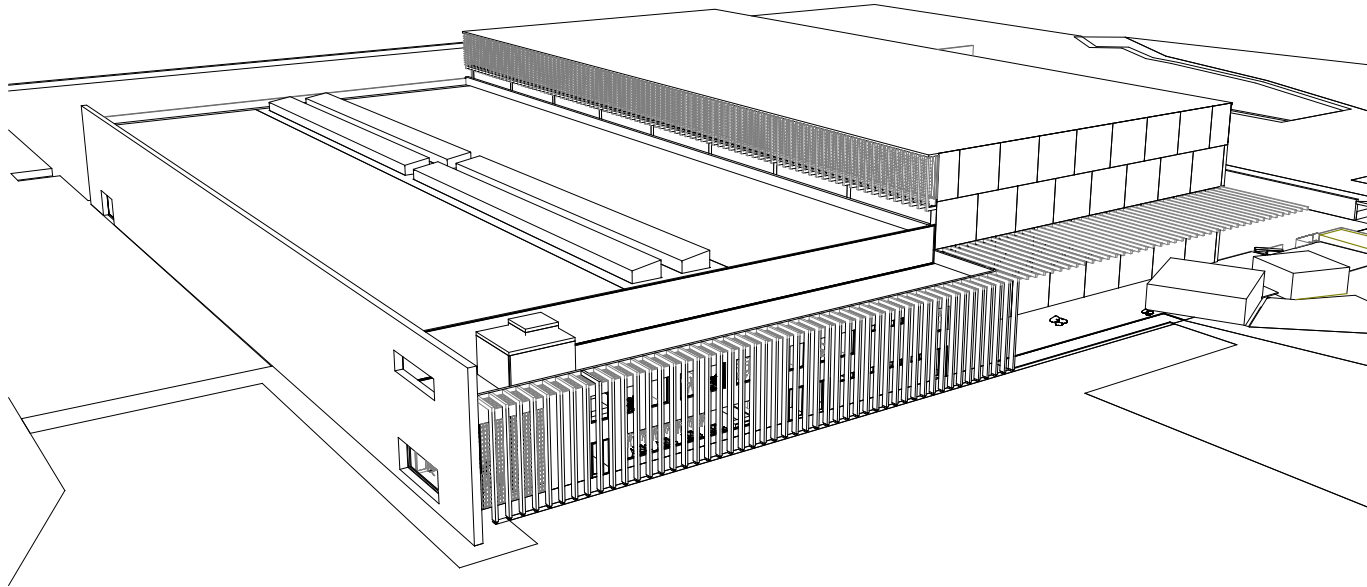
ECO WATER FACTORY
ADRANO (CATANIA)

2018

SERGIO PASCOLO ARCHITECTS

Team:

Sergio Pascolo
Philippe Chazee
Andrea Morri
Claudia Lambini



ECO WATER FACTORY

The project is located in Adrano, Province of Catania, close to the Etna volcano. The water bottling plant, directly from the source located a few meters from the building, consists of a Production block with its three bottling lines (90m x 50m), a Warehouse block (90m x 40m), where the automated storage system operates and an Office block (10m x 50m), with a wooden structure, which hosts the operational offices, meeting rooms, visitors' entrance, lounges and services. The structure of the Production block is divided into three bays, while the Warehouse's one has a single light. A second phase is planned with the doubling of the Production and Warehouse blocks, bringing the total area from 8,600 sqm to 16,700 sqm.

The project maximizes the use of ventilation and natural lighting, and develops a multi-use water system, which includes solar thermal and photovoltaic systems on the roof of the Warehouse block. The project proposes an innovative and sustainable approach to the integration of the industrial plant into the landscape, transforming the large roofs into a hydroponic park open to customers and the public helping to raise public awareness of the efficient use of natural resources. The water of the hydroponic cultivation also feeds the water wall contributing to the garden terrace cooling. The integration to the landscape and the image from the outside of the plant is defined by a continuous wall made of lava stone that delimits the entire complex, creating a visual backdrop on Mount Etna.

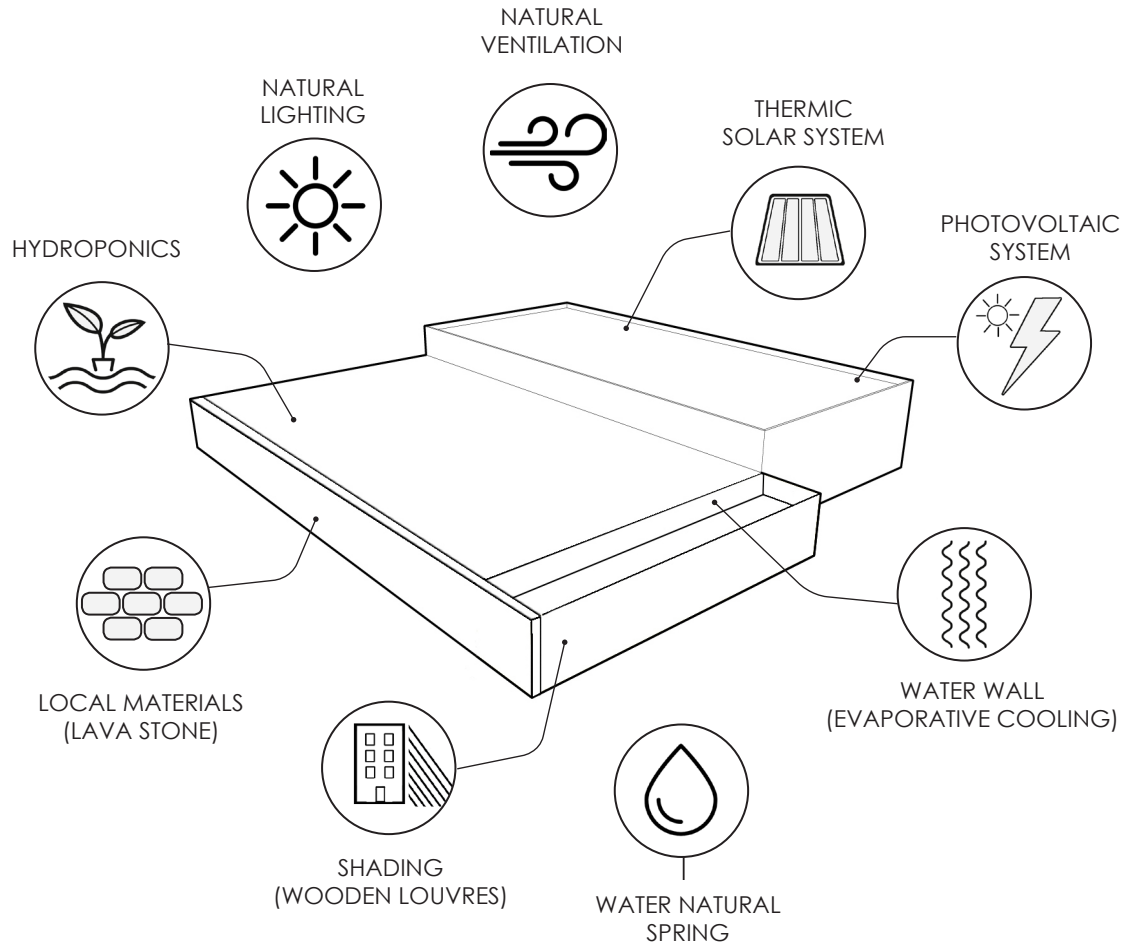
Private customer

Total floor area: 16,700 sqm (first and second phase)

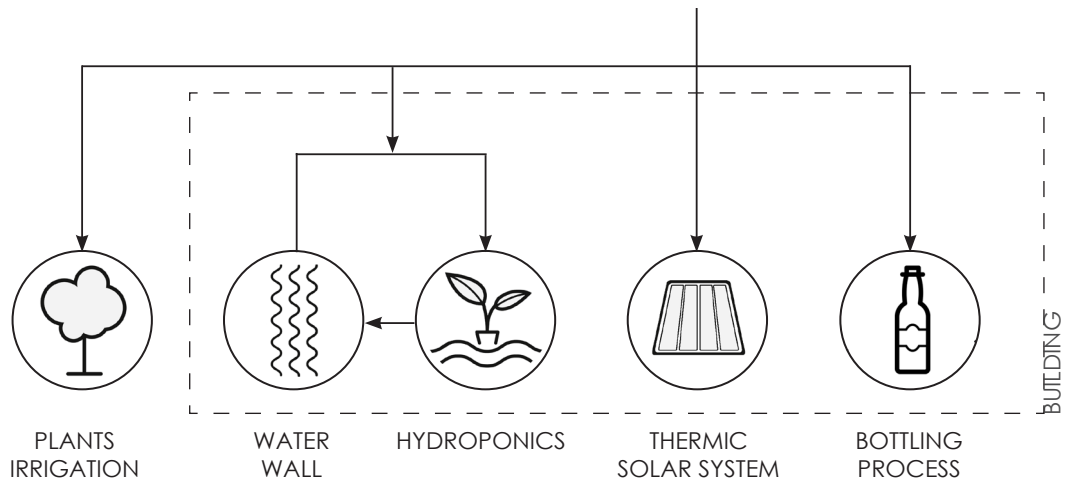
Phase 1: 8.100 sqm (Warehouse 3.600 sqm + Production 4.500 sqm + Offices 500 sqm)

Phase 2: 8,100 sqm (Warehouse 3,600 sqm + Production 4,500 sqm)

BIOCLIMATICS AND NATURAL RESOURCES



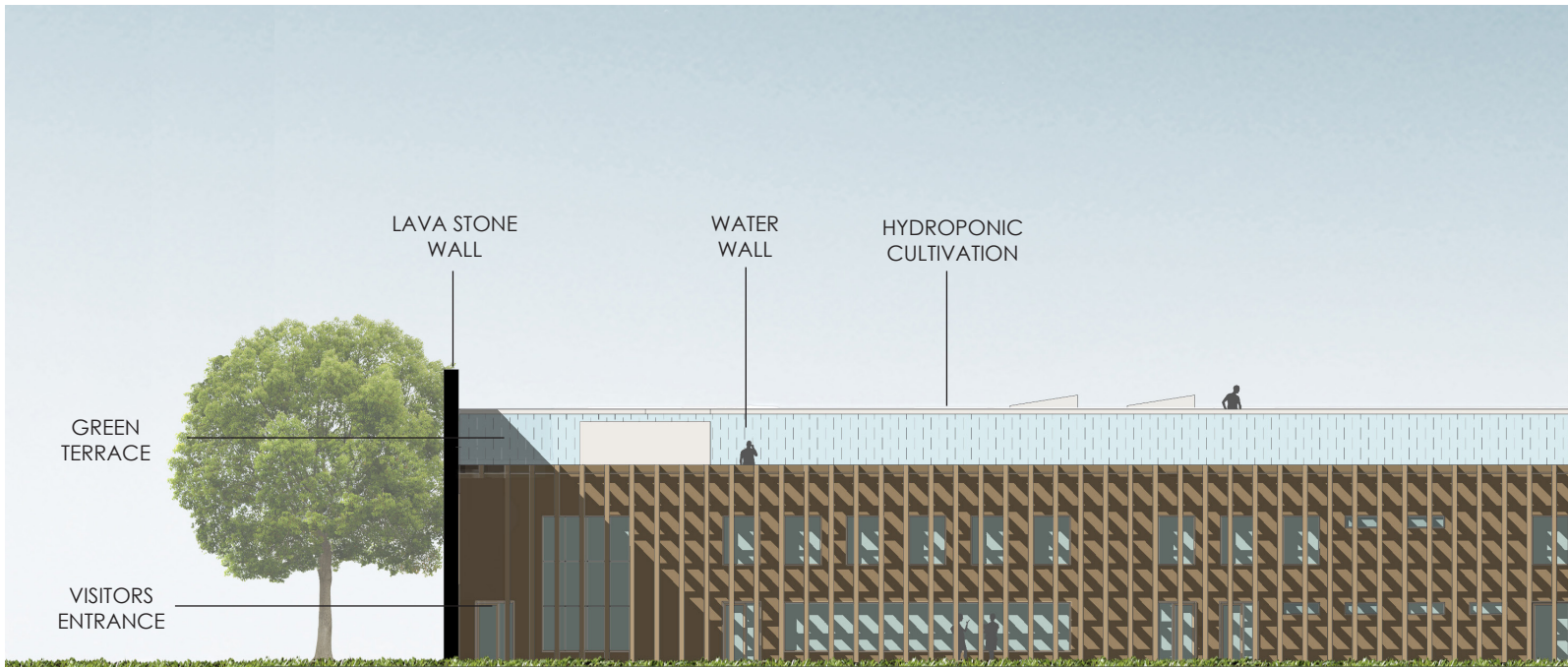
WATER CYCLE



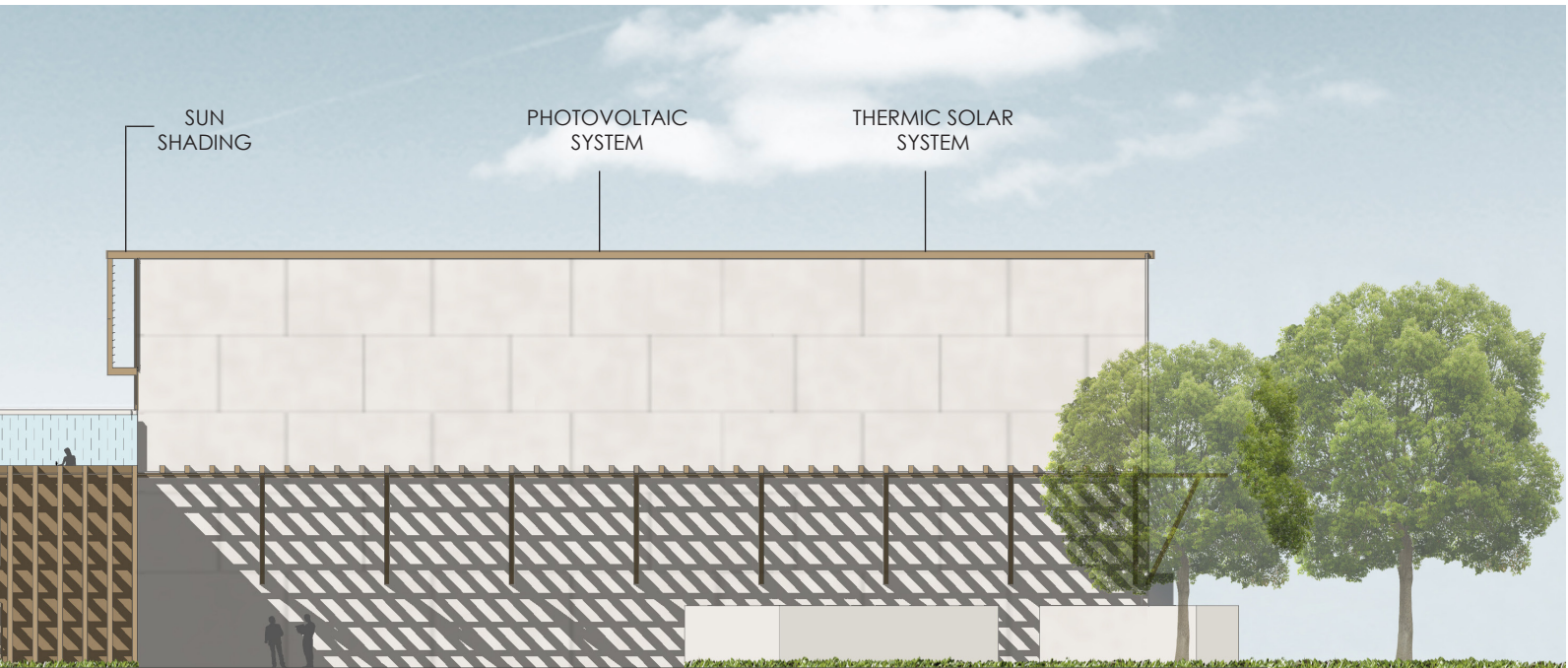




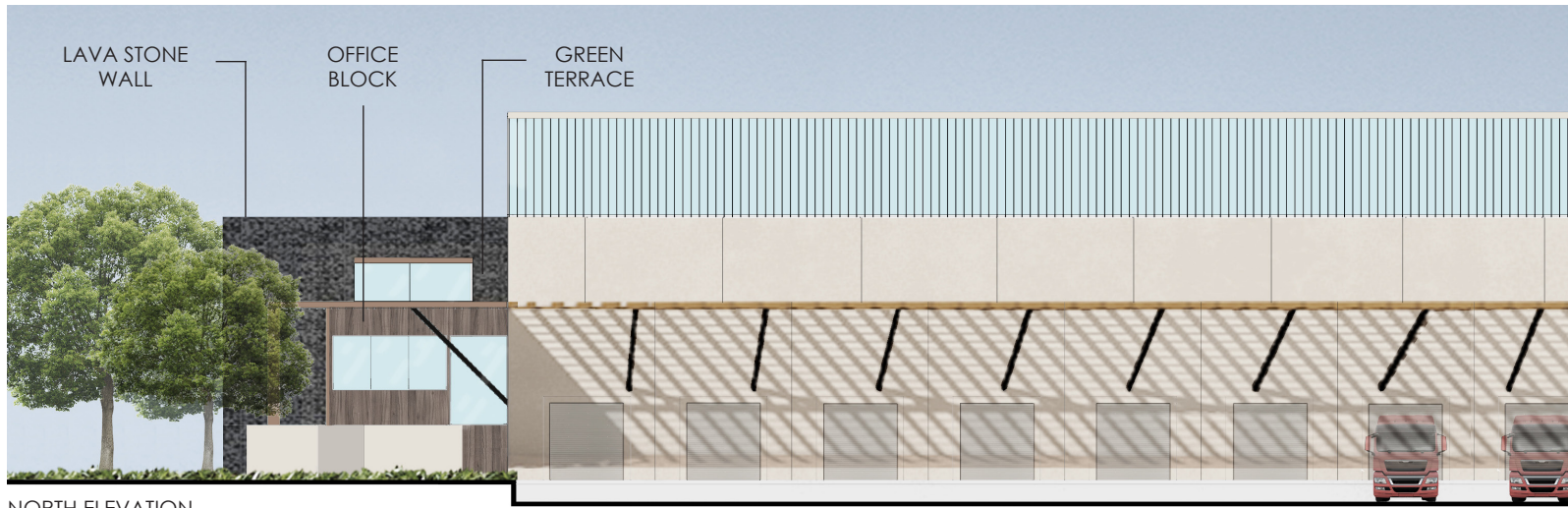
WEST ELEVATION



EAST ELEVATION



Eco Water Factory



NORTH ELEVATION



SOUTH ELEVATION

LOCAL MATERIALS



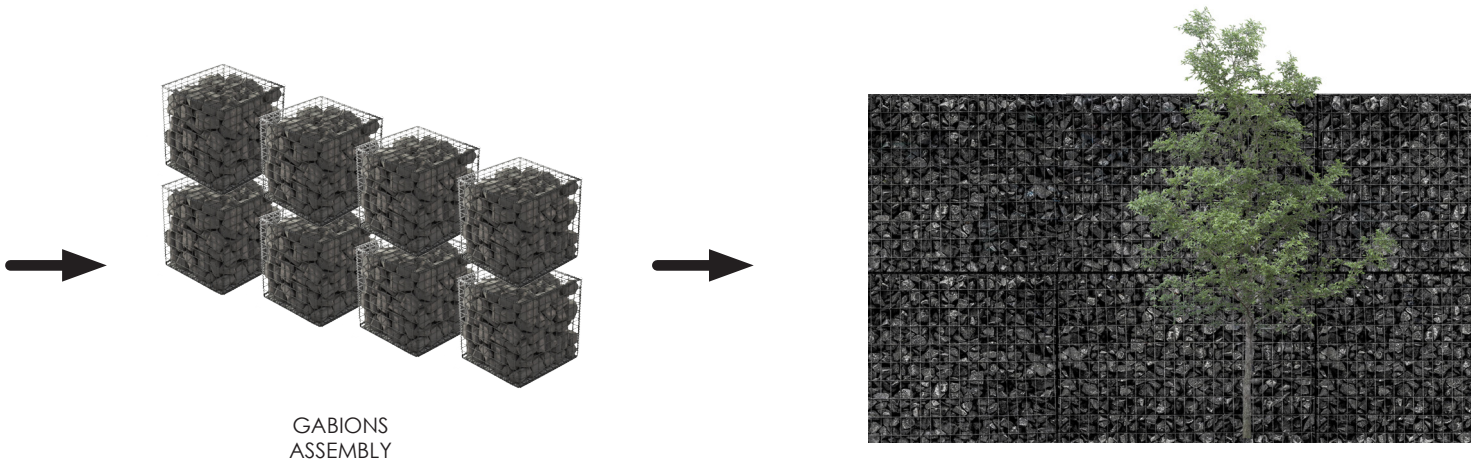
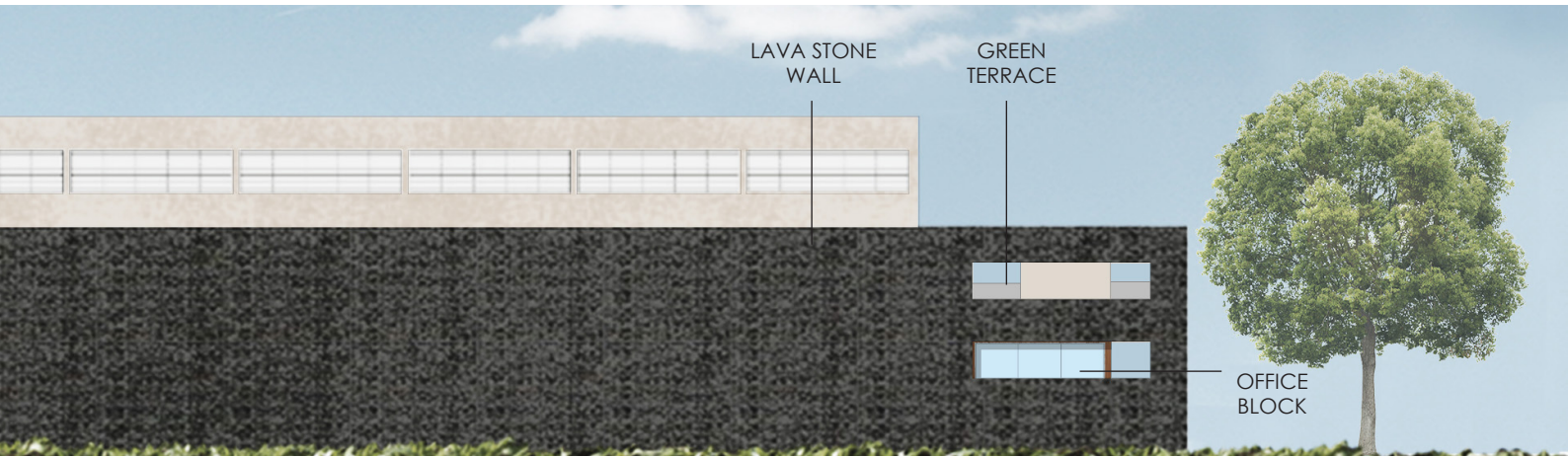
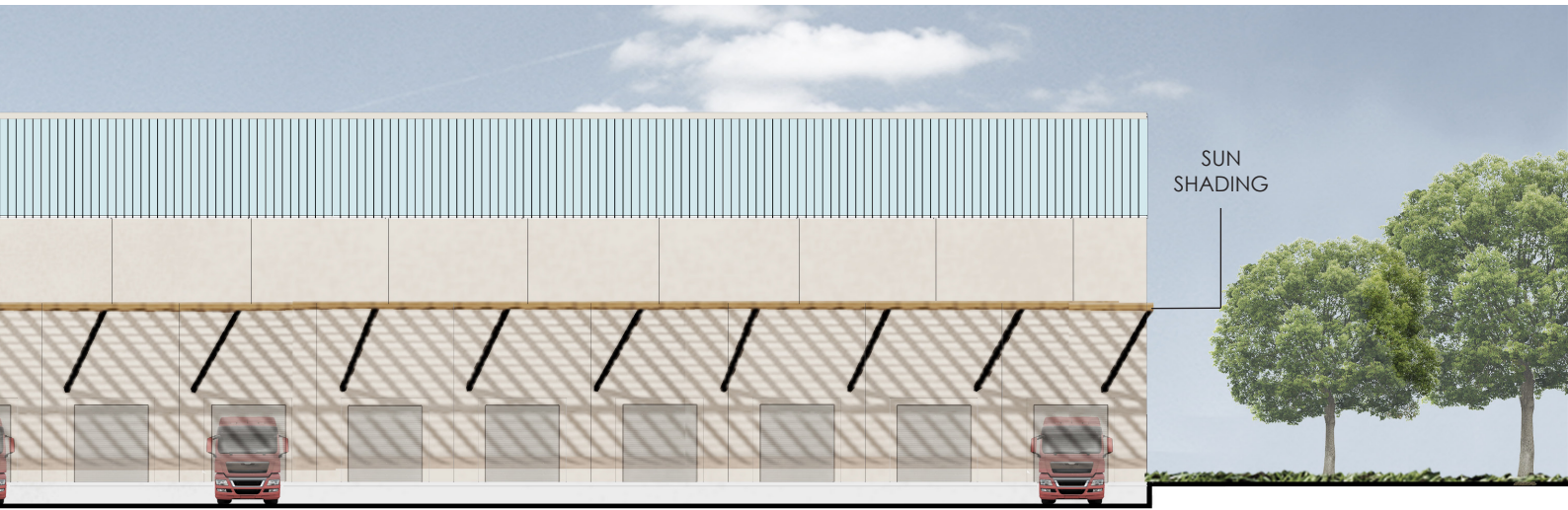
LOCAL NATURAL RESOURCES
(ETNA VOLCANO)

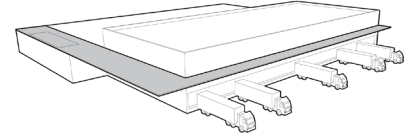
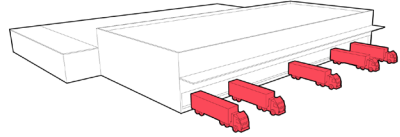
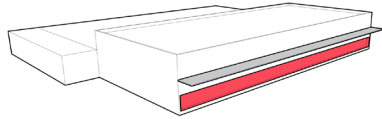


BLACK LAVA
STONES

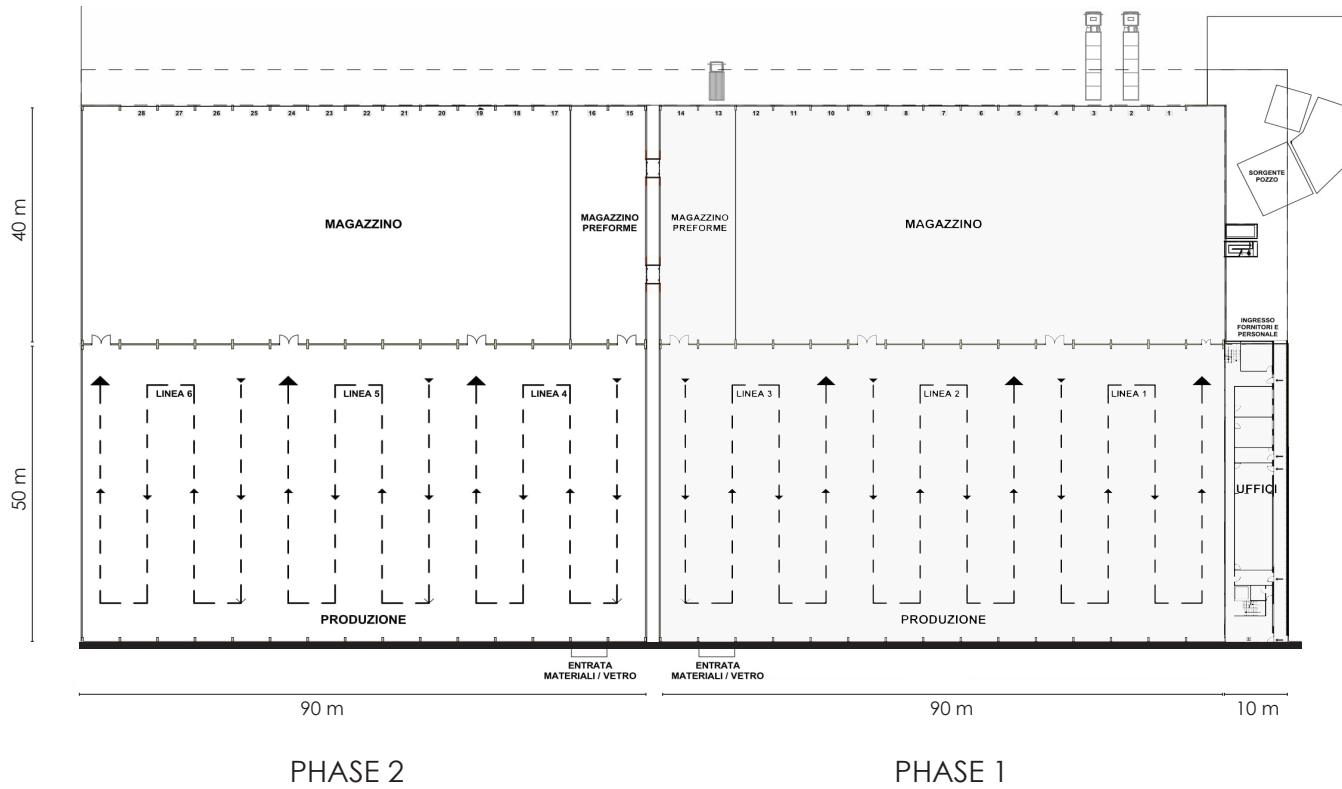


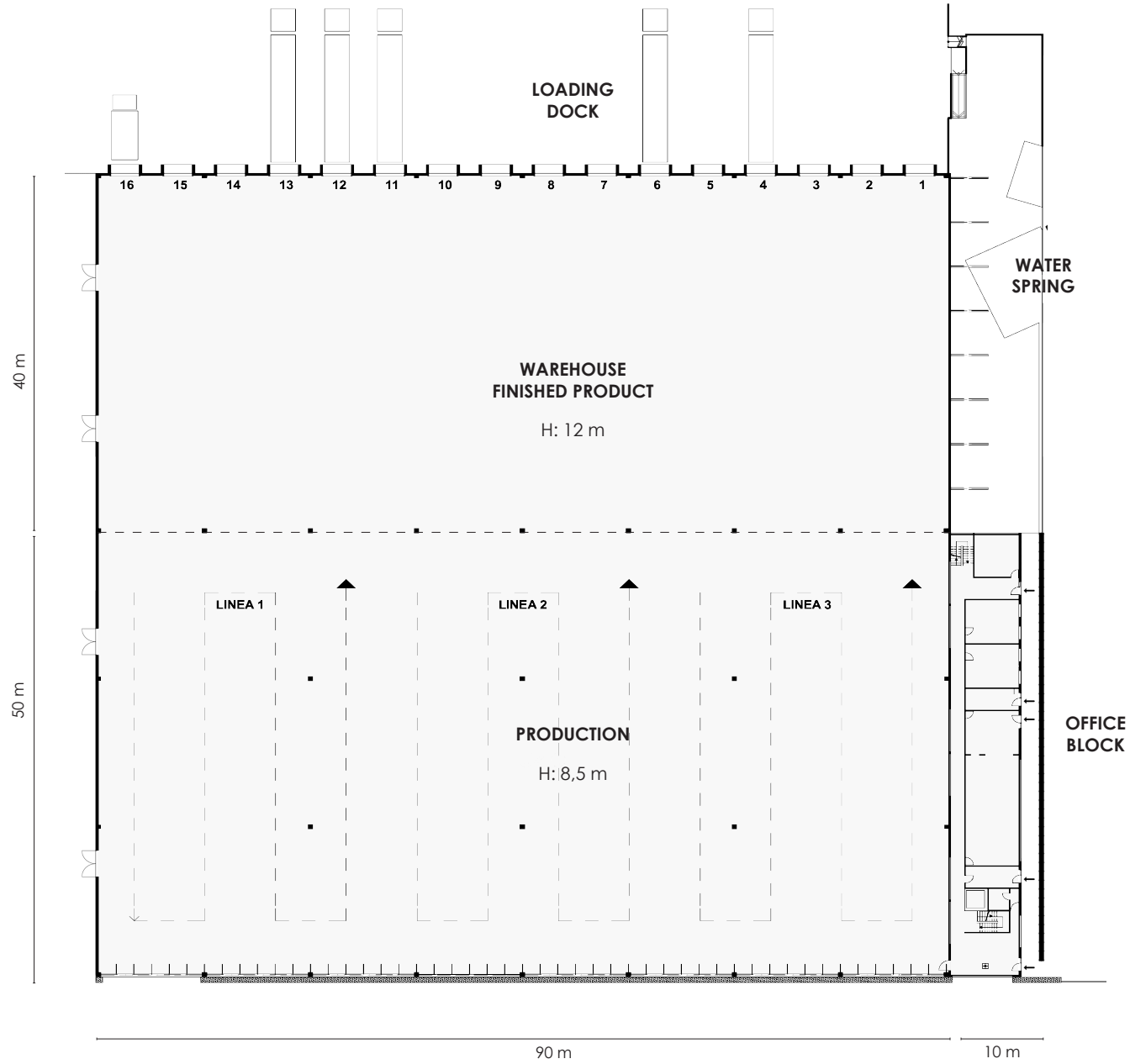
GABION
(LAVA STONES + METALLIC CAGE)



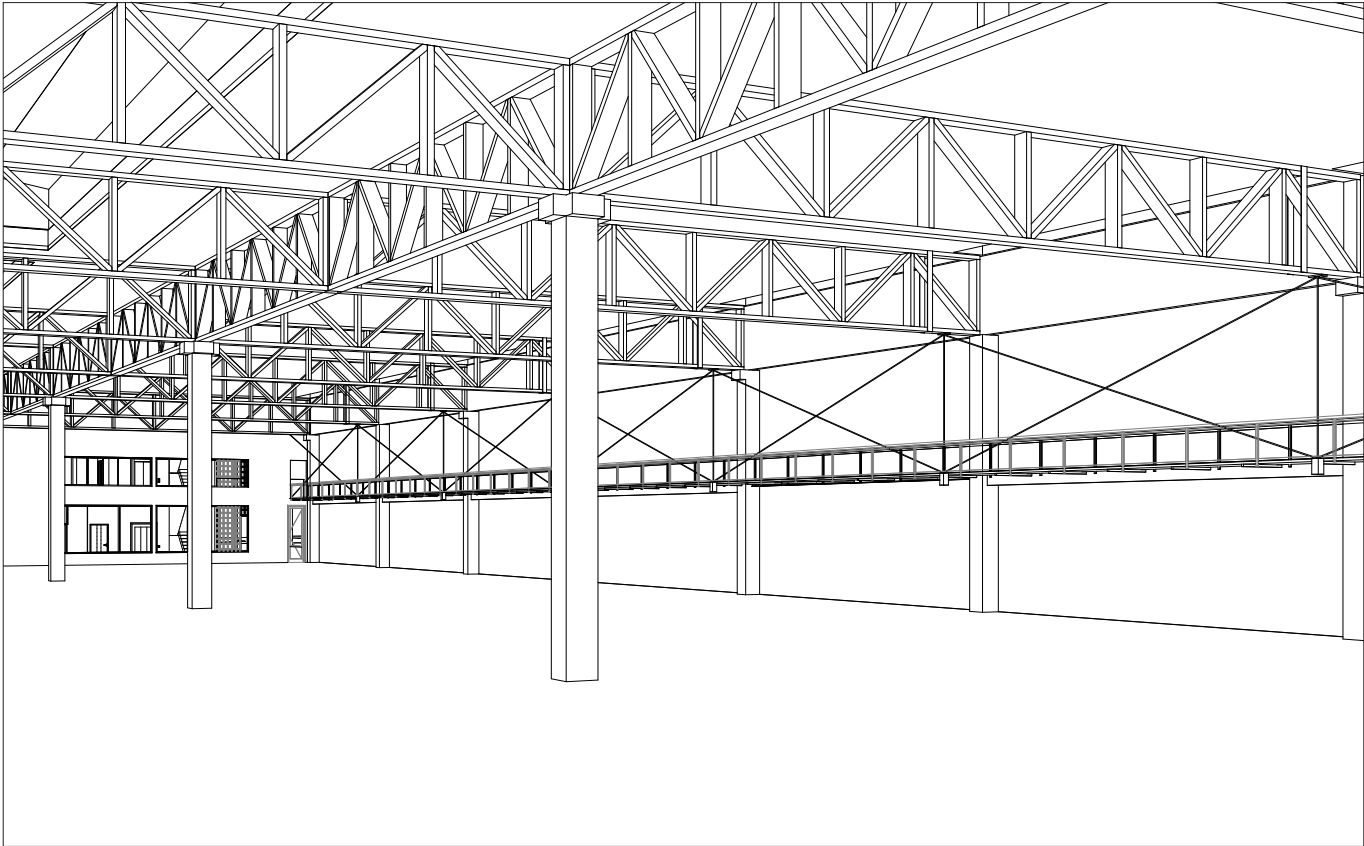


LOADING DOCK



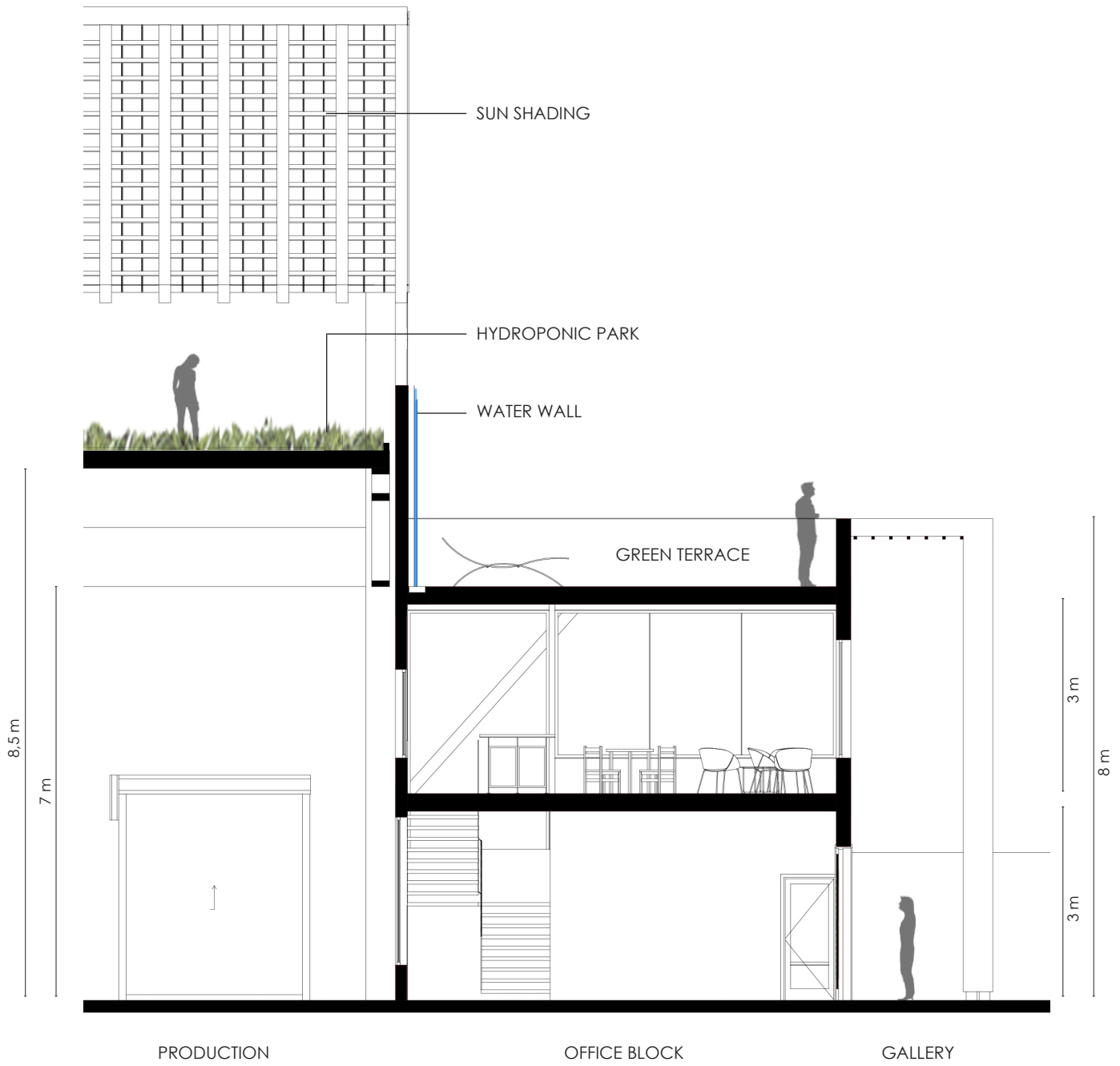


PHASE 1



INDOOR VIEW OF THE PRODUCTION BLOCK

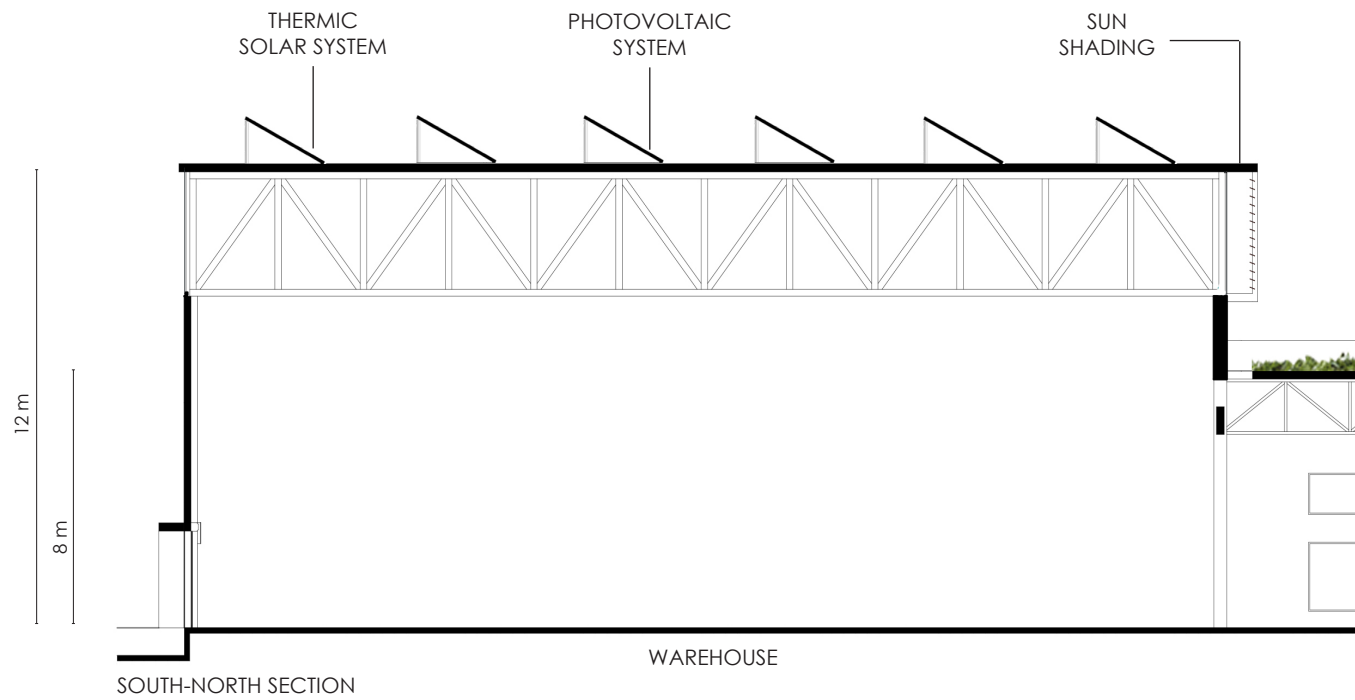
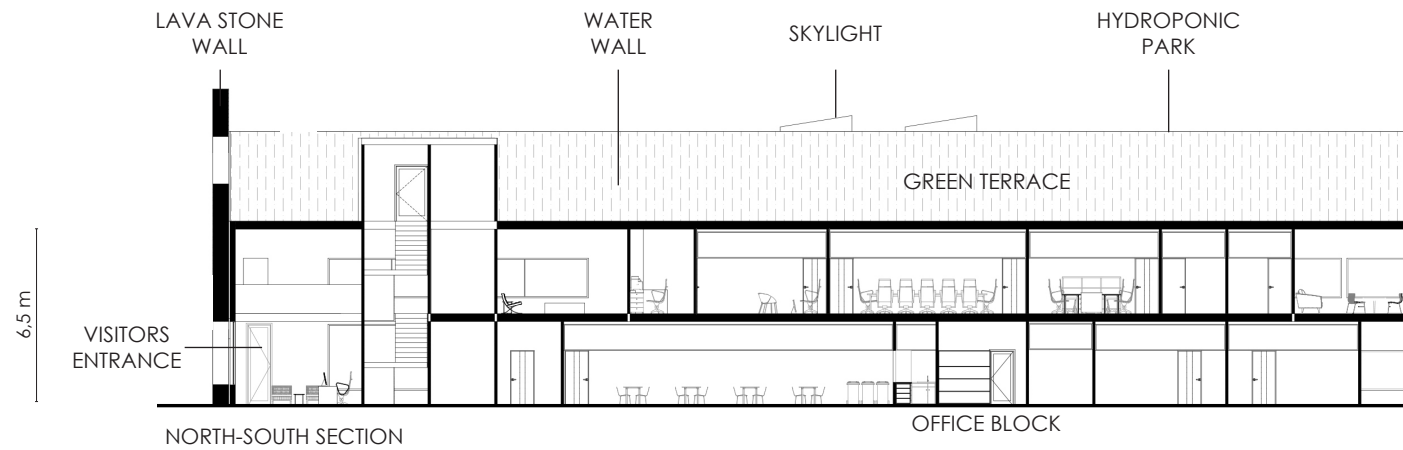


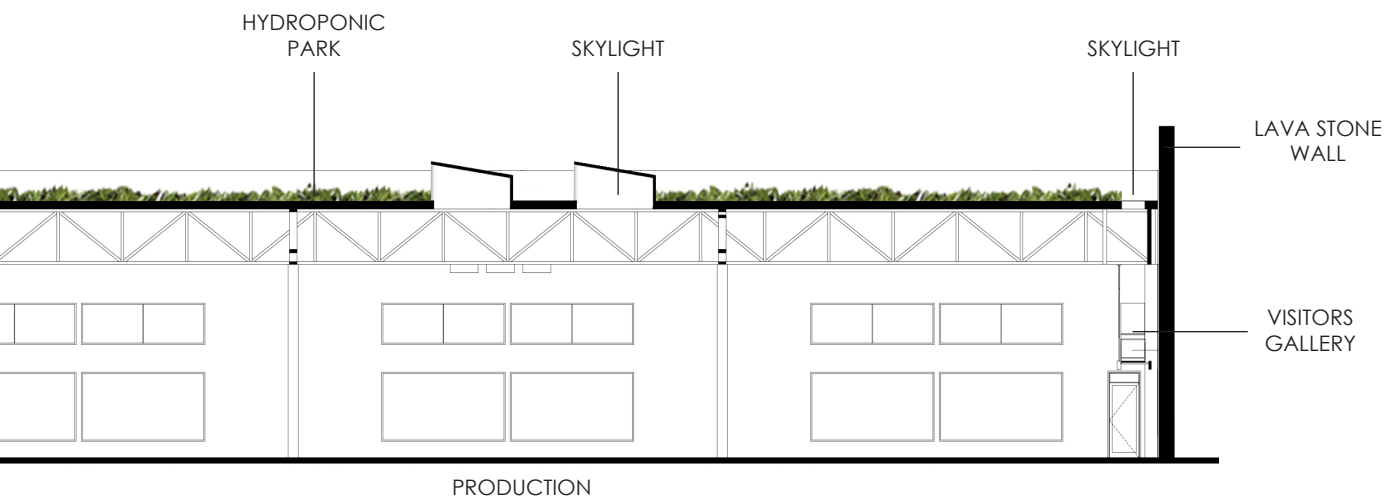
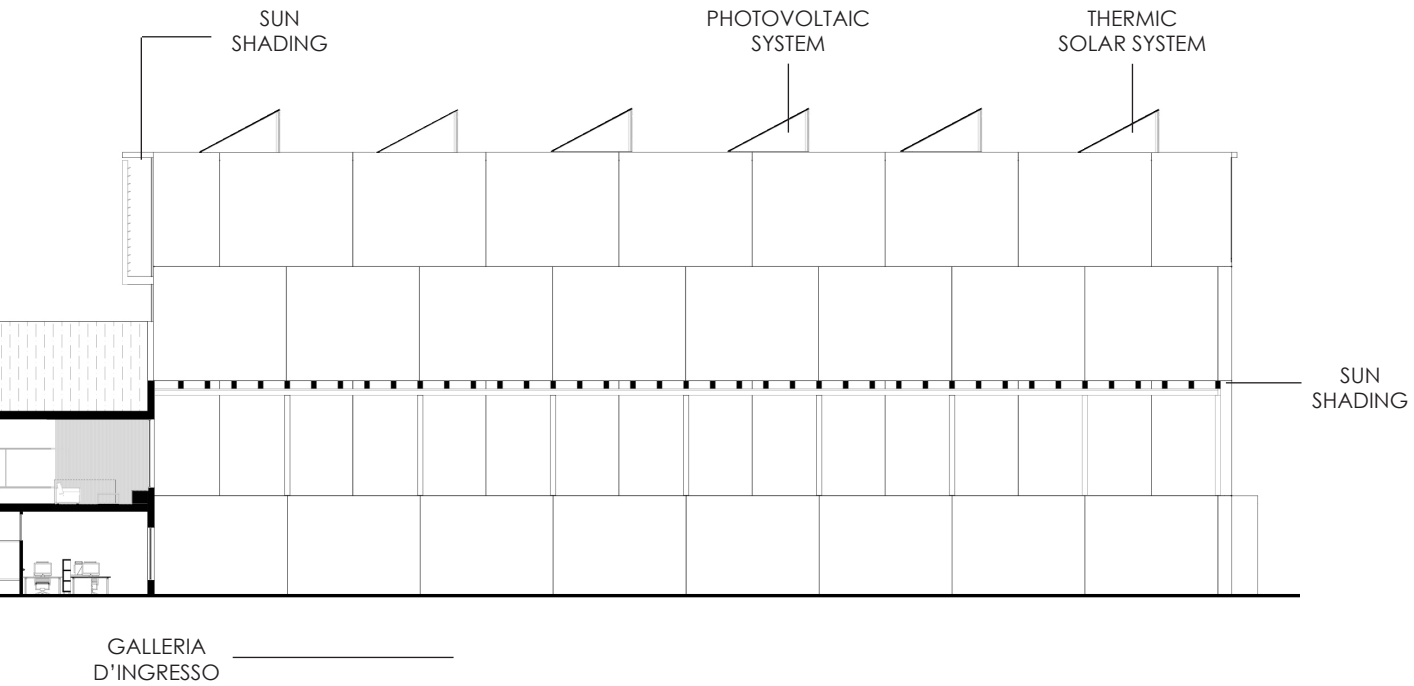


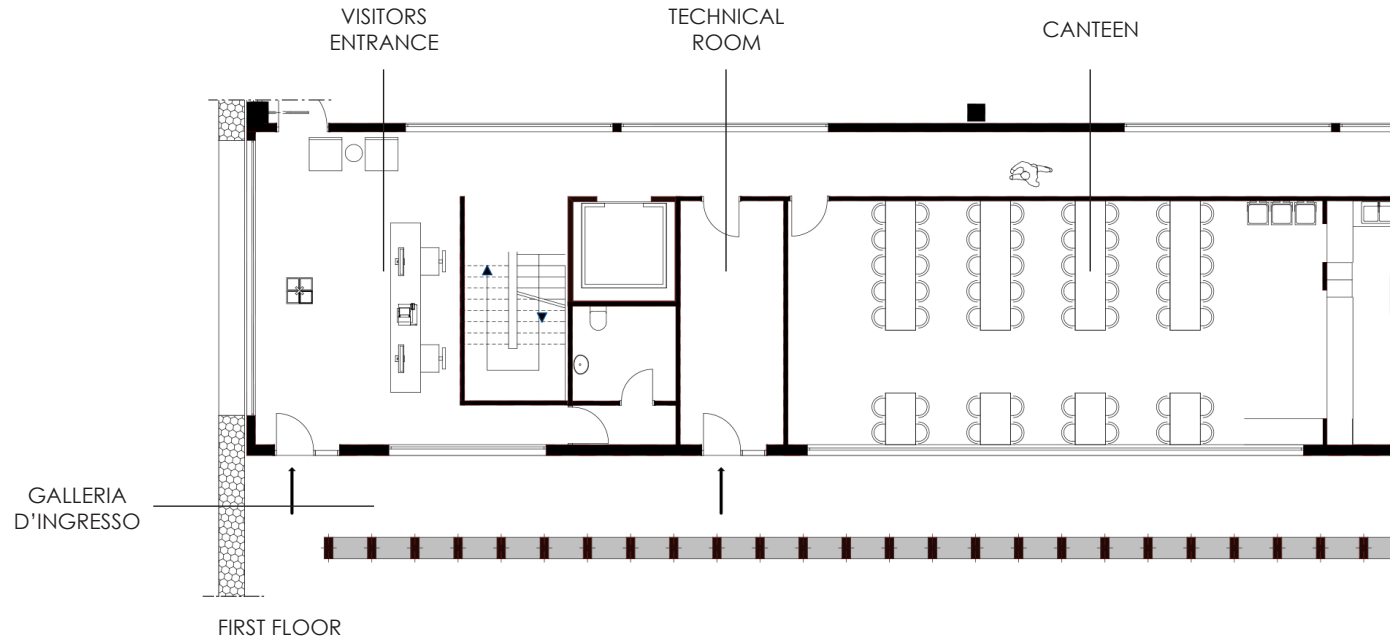
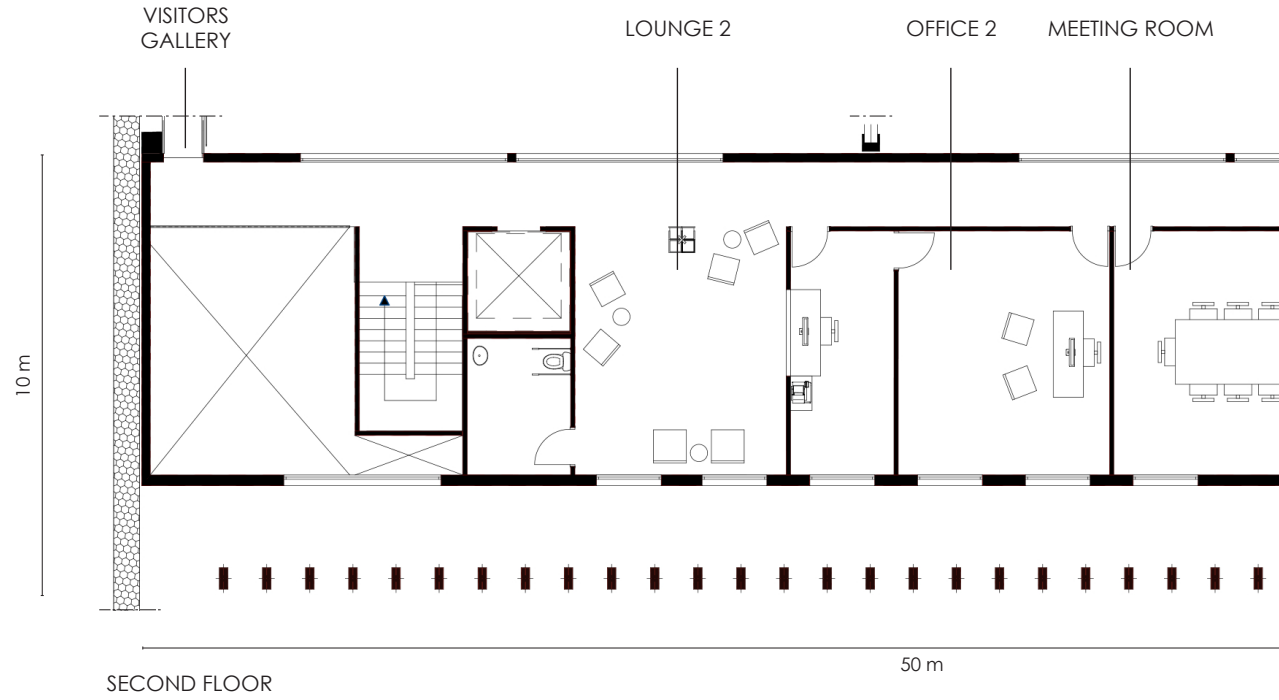
Eco Water Factory

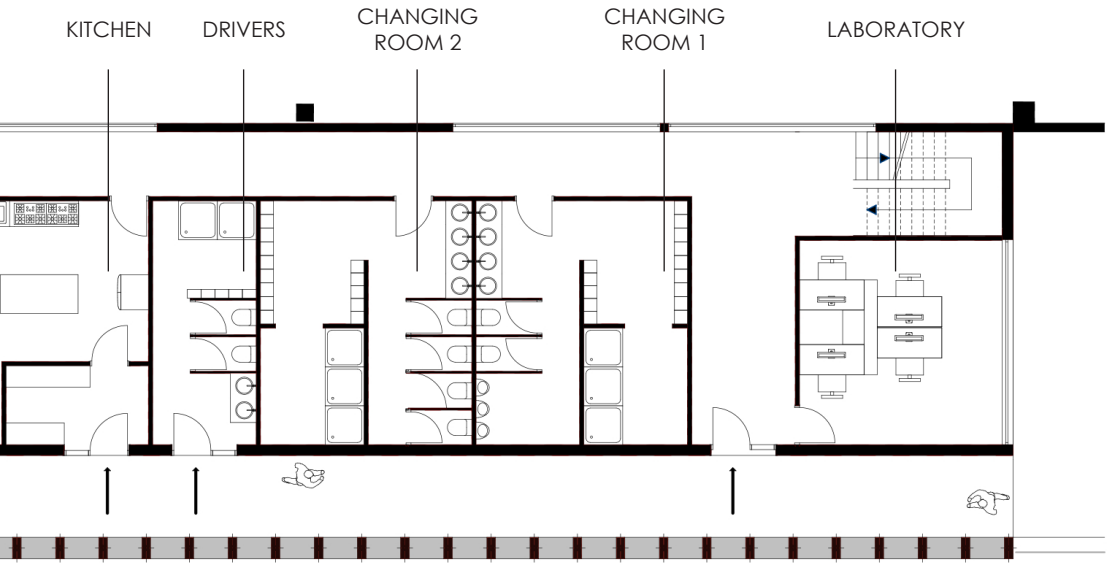
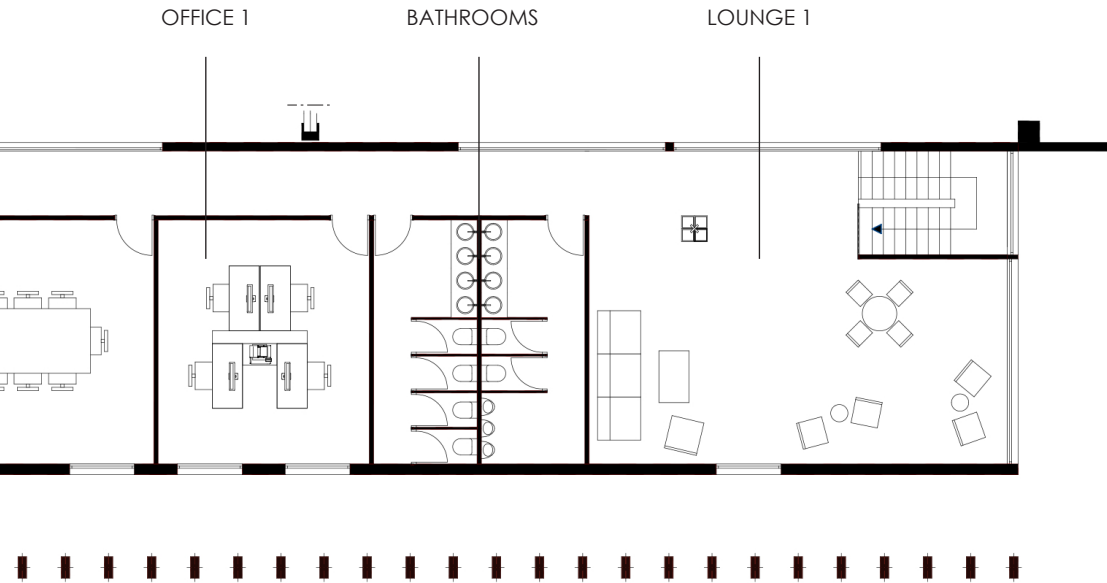


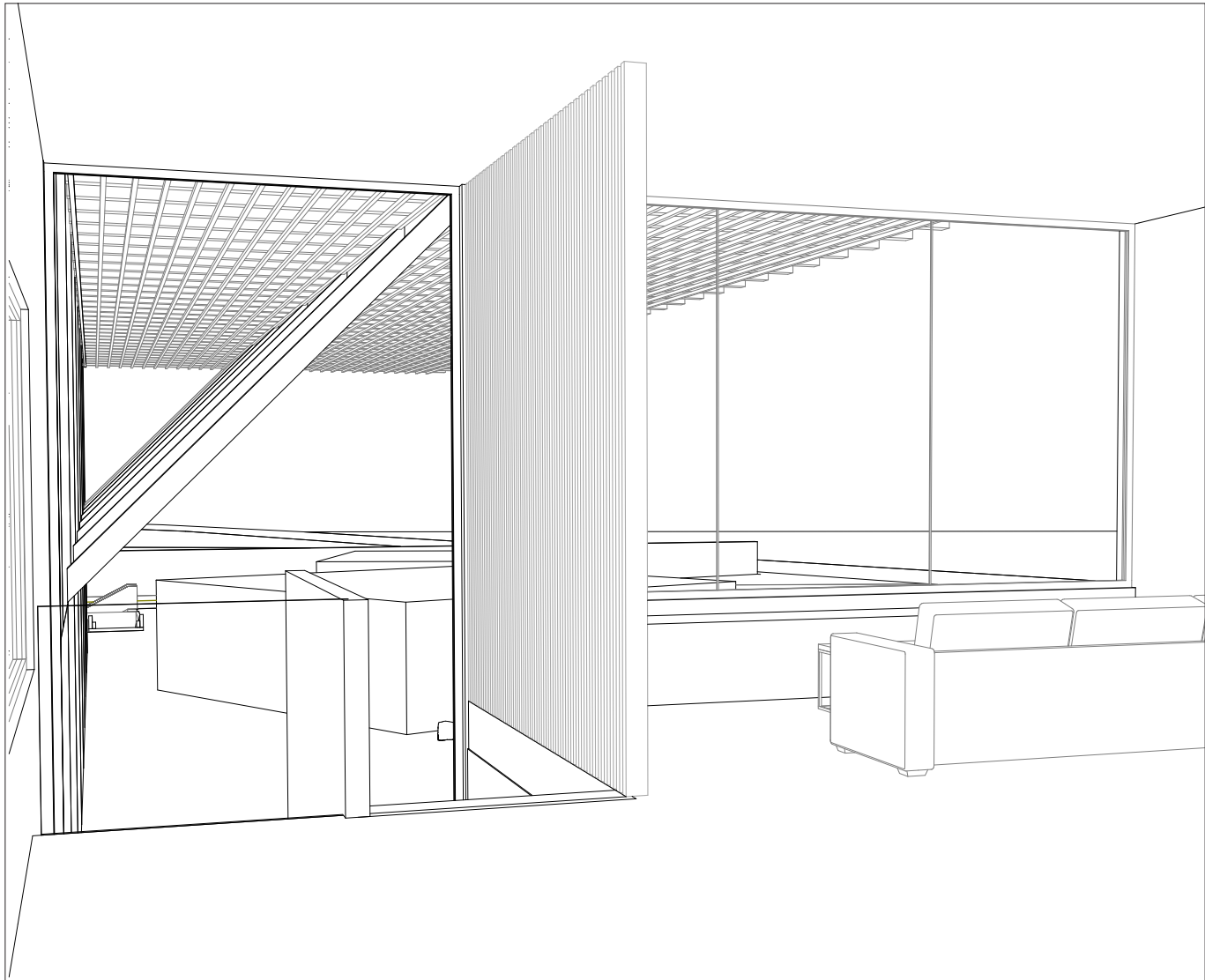
Eco Water Factory



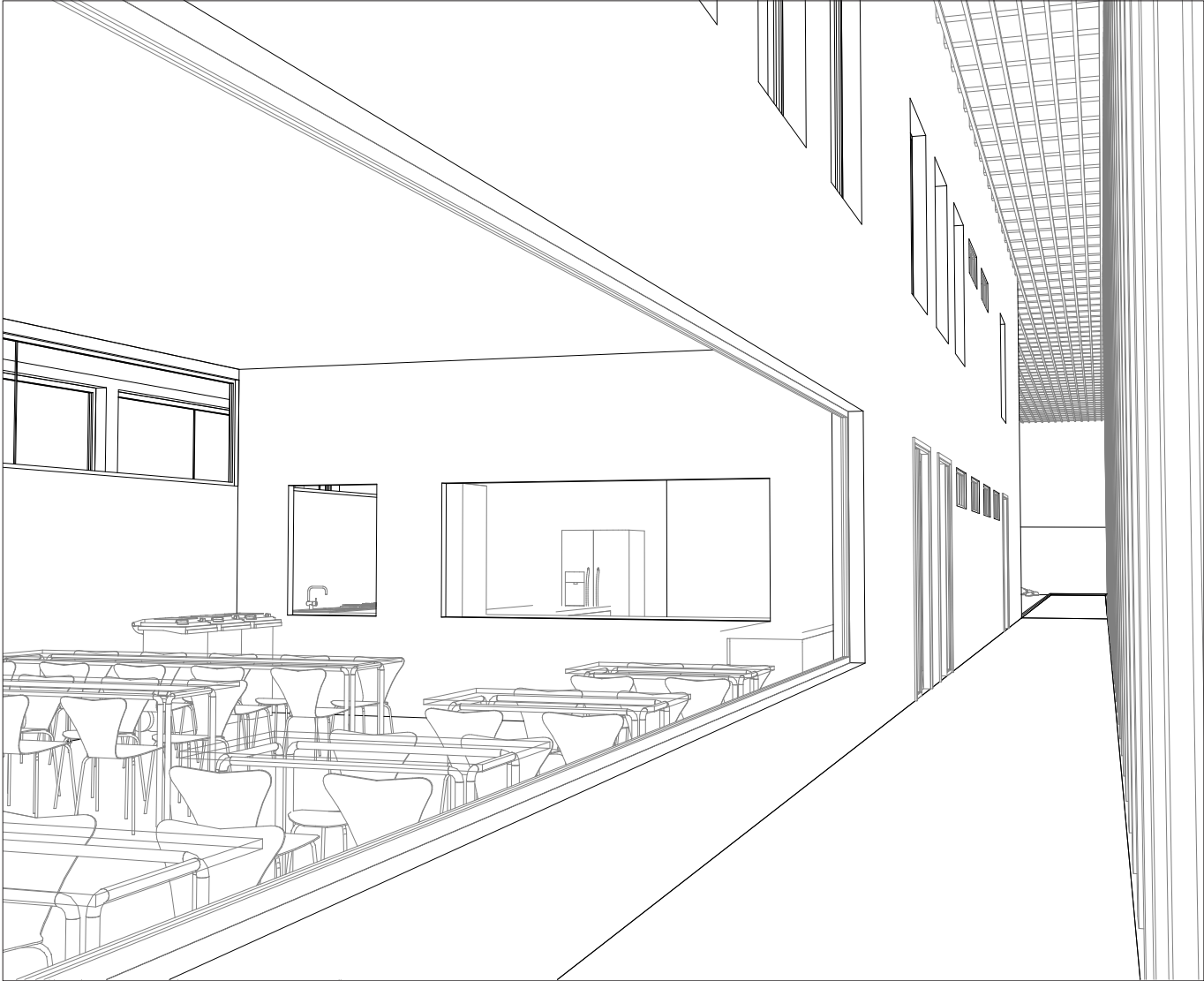








VIEW FROM THE LOUGE TOWARDS THE OUTDOOR



VIEW OF THE ENTRANCE GALLERY AND THE CANTEEN



VIEW FROM THE VISITOR ENTRANCE TOWARD THE PRODUCTION BLOCK



SERGIO PASCOLO ARCHITECTS

Sestiere Santa Croce 862
30135 Venezia

tel. +39 041 24 40 292
studio@sergiopascolo.it
www.sergiopascoloarchitects.com

www.sergiopascoloarchitects.com