



600 DWELLINGS DISTRICT
Grüne Mitte Ebertal, Göttingen

600 DWELLINGS DISTRICT

The project regards the urban and structural requalification of a social housing estate, which was built in the 1960s for 440 social housing units in the first periphery of the city.

After extensive studies, the sustainability of a functional and energetic refurbishment have been excluded. Based on this insight, it was decided to plan an urban renewal with integrative environmentally friendly new buildings. The aim was to develop a district able to guarantee all residents new apartments with the same rental prices. In order to maintain this principle, the construction site was divided into various segments, with the first construction phase of 25 apartments. This step-by-step approach makes it possible for the residents to move directly to the new apartments and at the same time to continuously increase the living space and commercial space shaping the district as a social space.

Client: Städtische Wohnungsbau Göttingen
Aufgabe: Structural requalification of a social housing estate
in the Grüne Mitte Ebertal district
Site area: 5 ha
Total floor area: 53.700 sqm
600 Apartments
Year: 2018 (Rahmenplan)

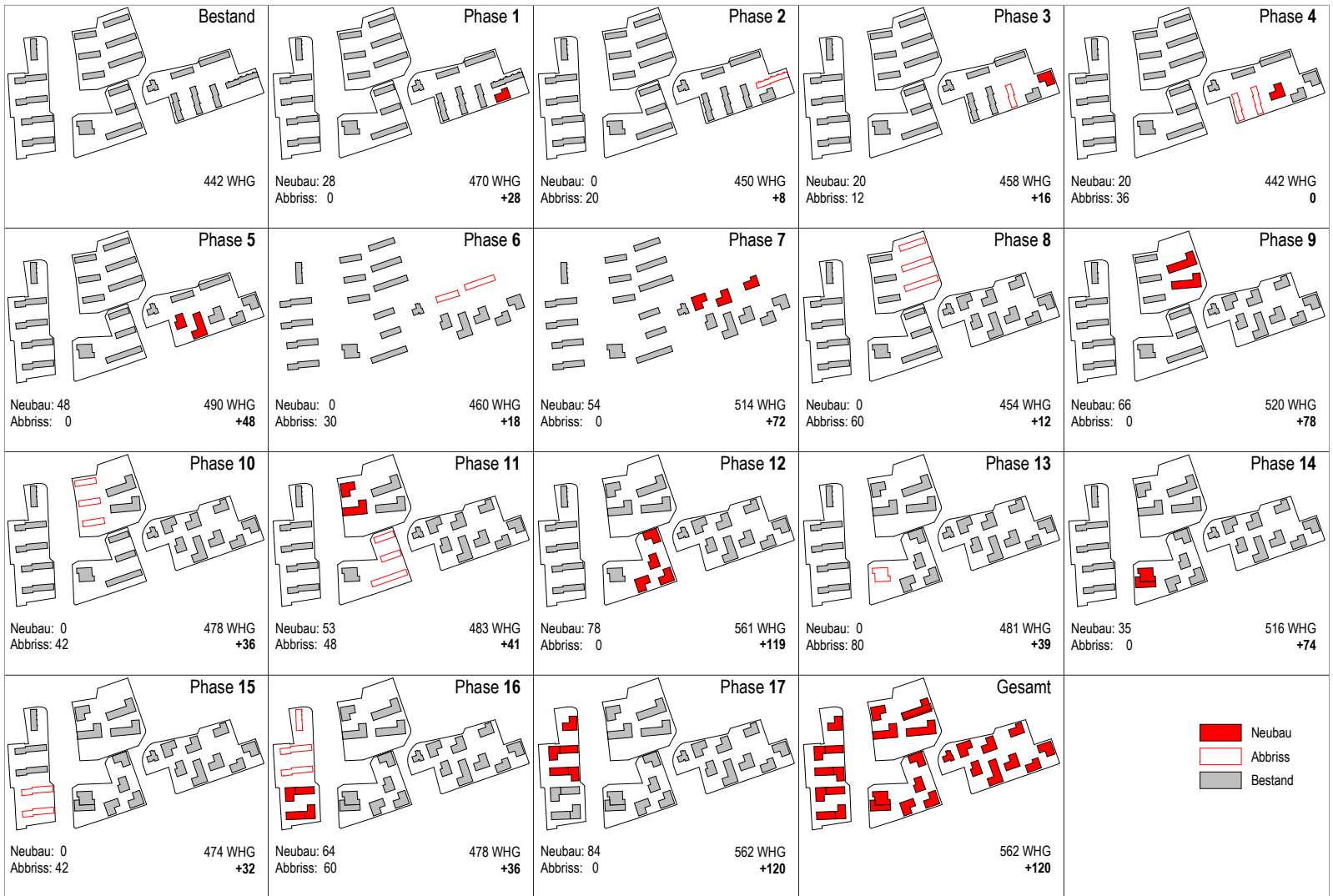
600 DWELLINGS DISTRICT





SERGIO PASCOLO ARCHITECTS - HOUSING

600 DWELLINGS DISTRICT



600 DWELLINGS DISTRICT

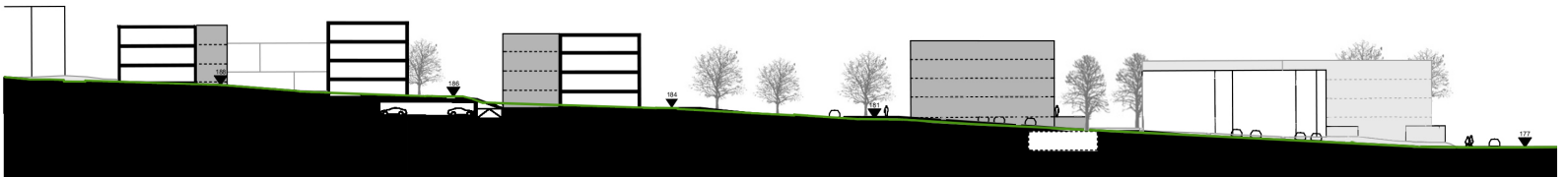


600 DWELLINGS DISTRICT

Schnitt F



Schnitt D



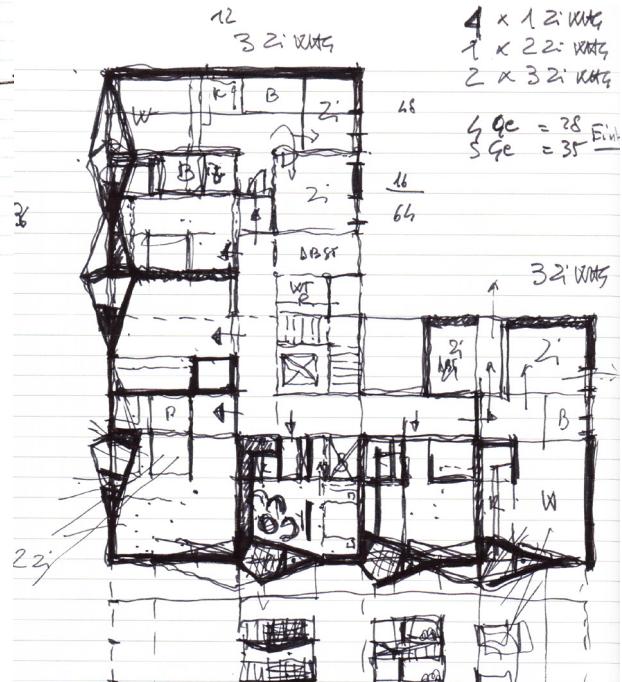
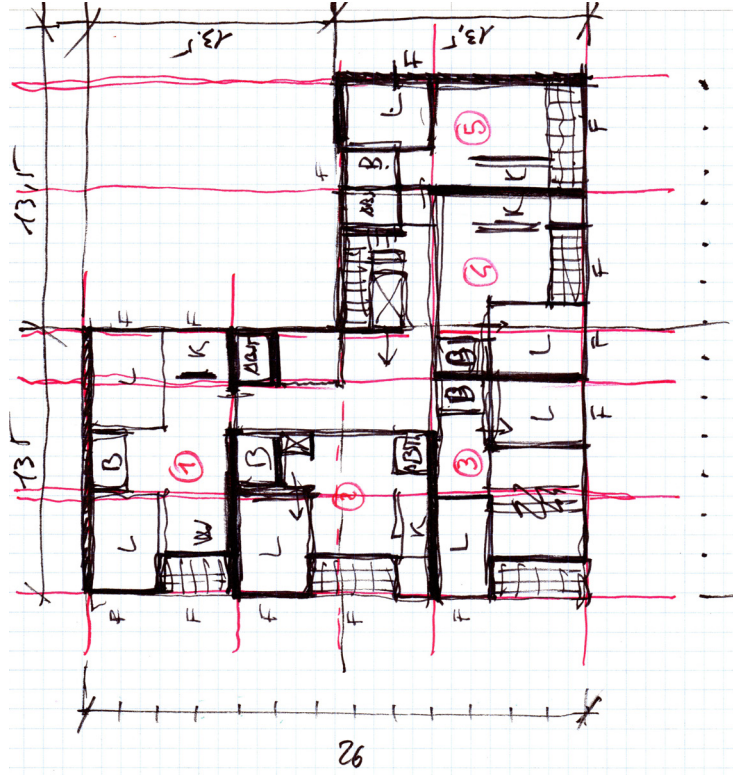
600 DWELLINGS DISTRICT



600 DWELLINGS DISTRICT



600 DWELLINGS DISTRICT



600 DWELLINGS DISTRICT

